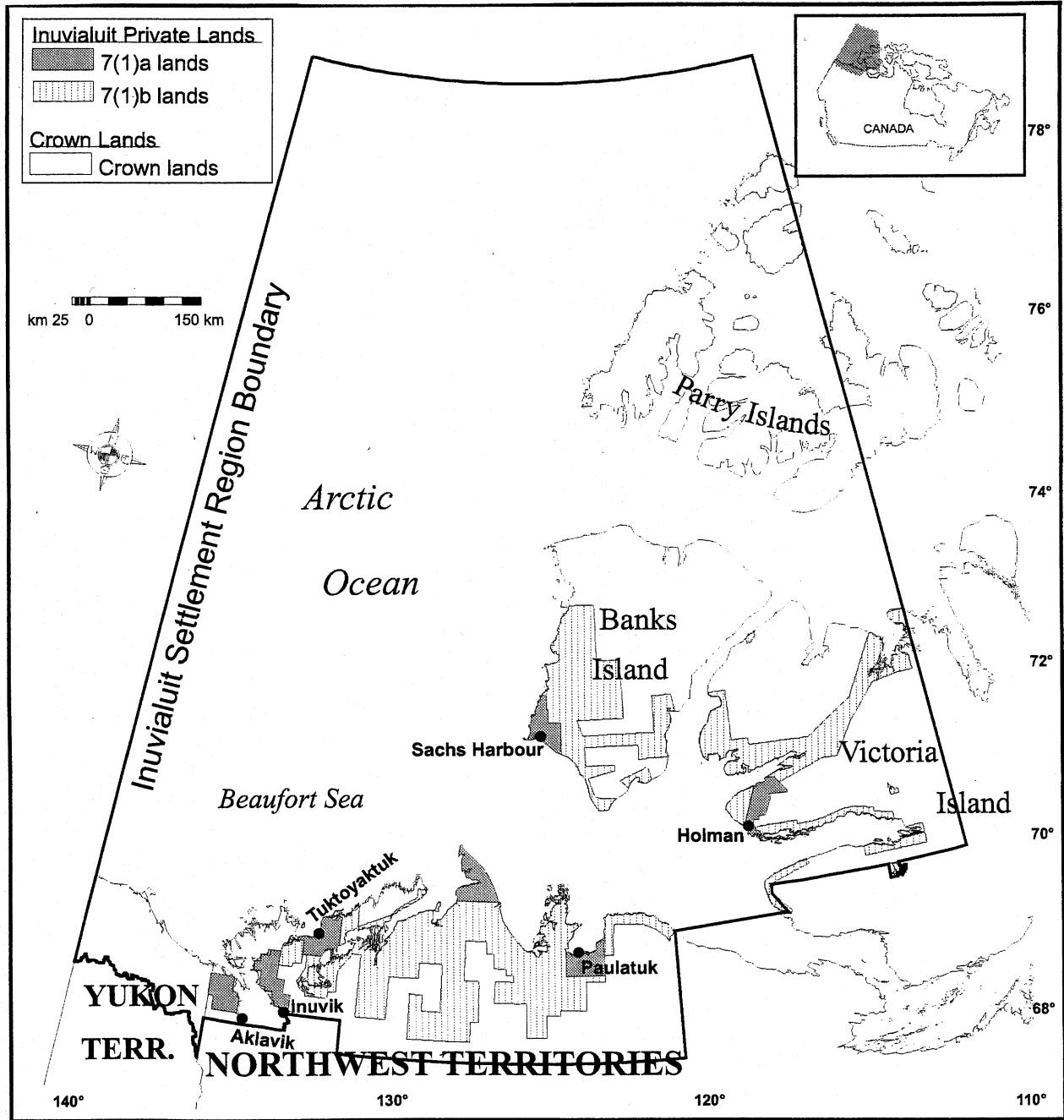

APPENDIX A

LIST OF MAPS

MAP 1	Inuvialuit Settlement Region: Private Inuvialuit Lands and Crown Lands Appendix A1 Source: Joint Secretariat - GIS
MAP 2	Protected Areas in the Inuvialuit Settlement Region Appendix A2 Source: Joint Secretariat - GIS
MAP 3	Environmental Sensitivity Map, Inuvialuit Settlement Region Appendix A3 Source: Indian Affairs and Northern Development, March 1998
MAP 4	Sachs Harbour: Inuvialuit-Owned Lands Appendix A4 Source: Joint Secretariat - GIS
MAP 5	Holman: Inuvialuit-Owned Lands Appendix A5 Source: Joint Secretariat - GIS
MAP 6	Inuvik and Aklavik: Inuvialuit-Owned Lands Appendix A6 Source: Joint Secretariat - GIS
MAP 7	Tuktoyaktuk: Inuvialuit-Owned Lands Appendix A7 Source: Joint Secretariat - GIS
MAP 8	Paulatuk: Inuvialuit-Owned Lands Appendix A8 Source: Joint Secretariat - GIS
MAP 9	Yukon North Slope Appendix A9 Source: Inuvialuit Final Agreement, Annex E

MAP 1

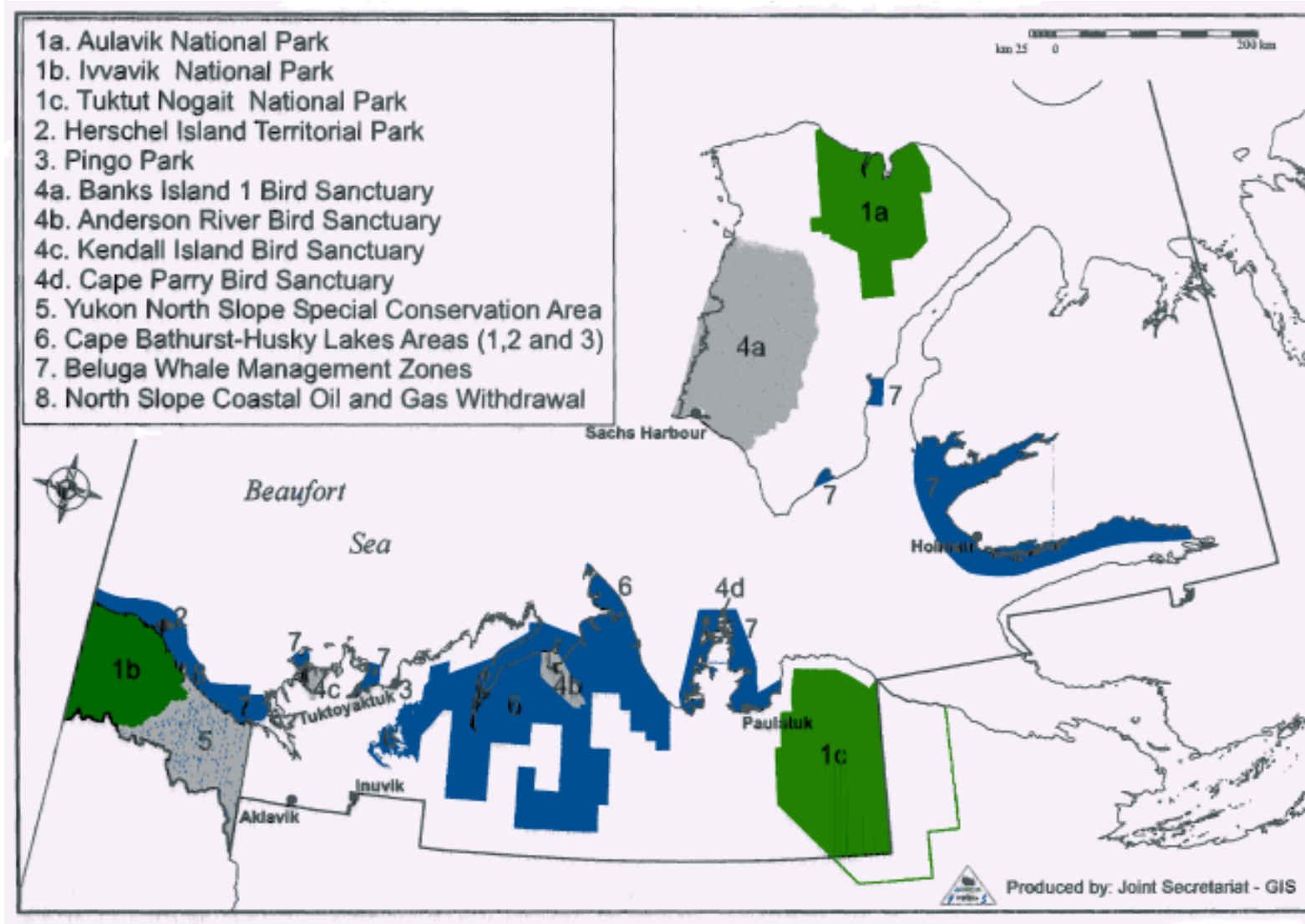
INUVIALUIT SETTLEMENT REGION
INUVIALUIT-OWNED LANDS AND CROWN LANDS

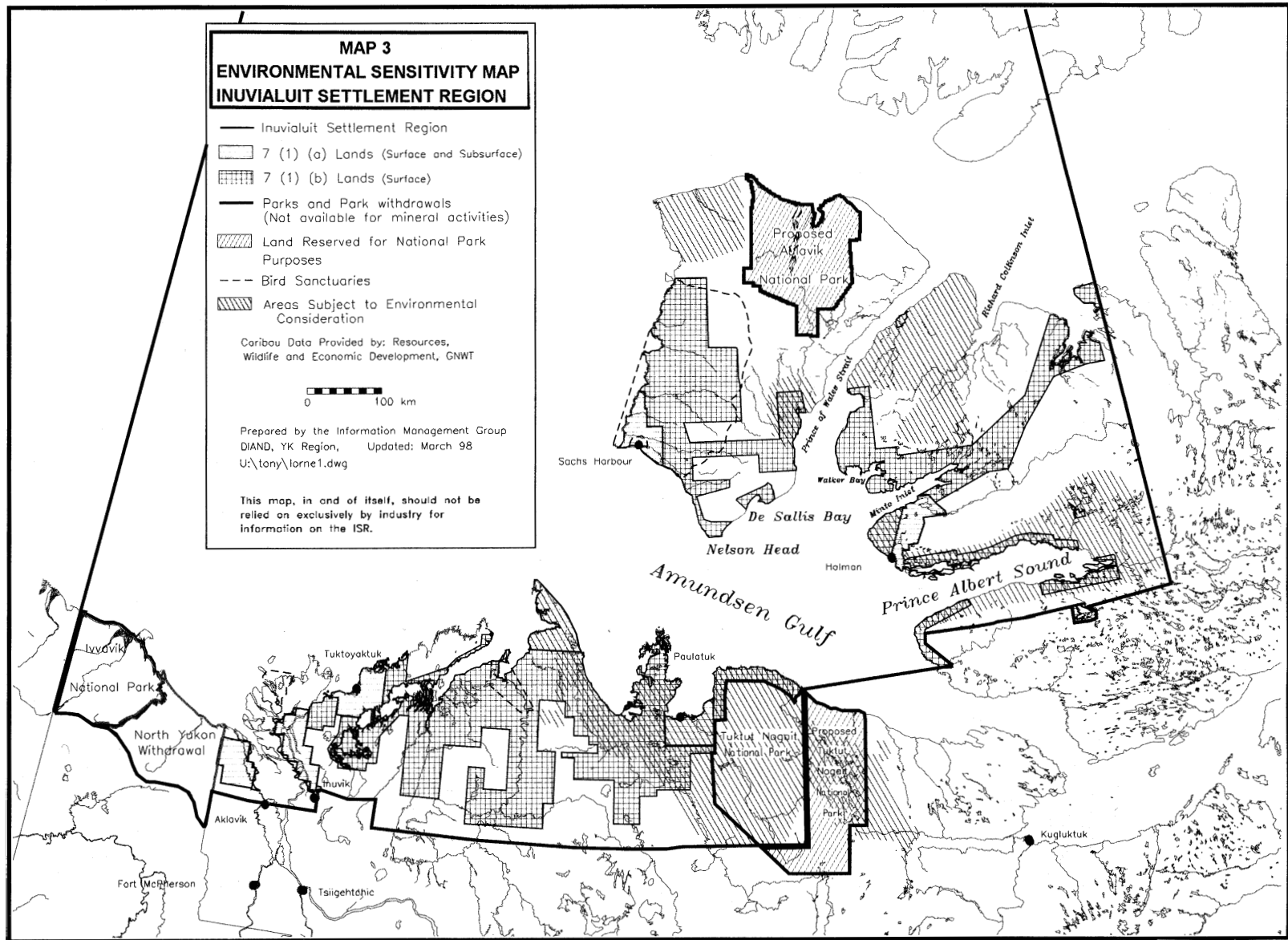


Produced by: Joint Secretariat - GIS

MAP 2

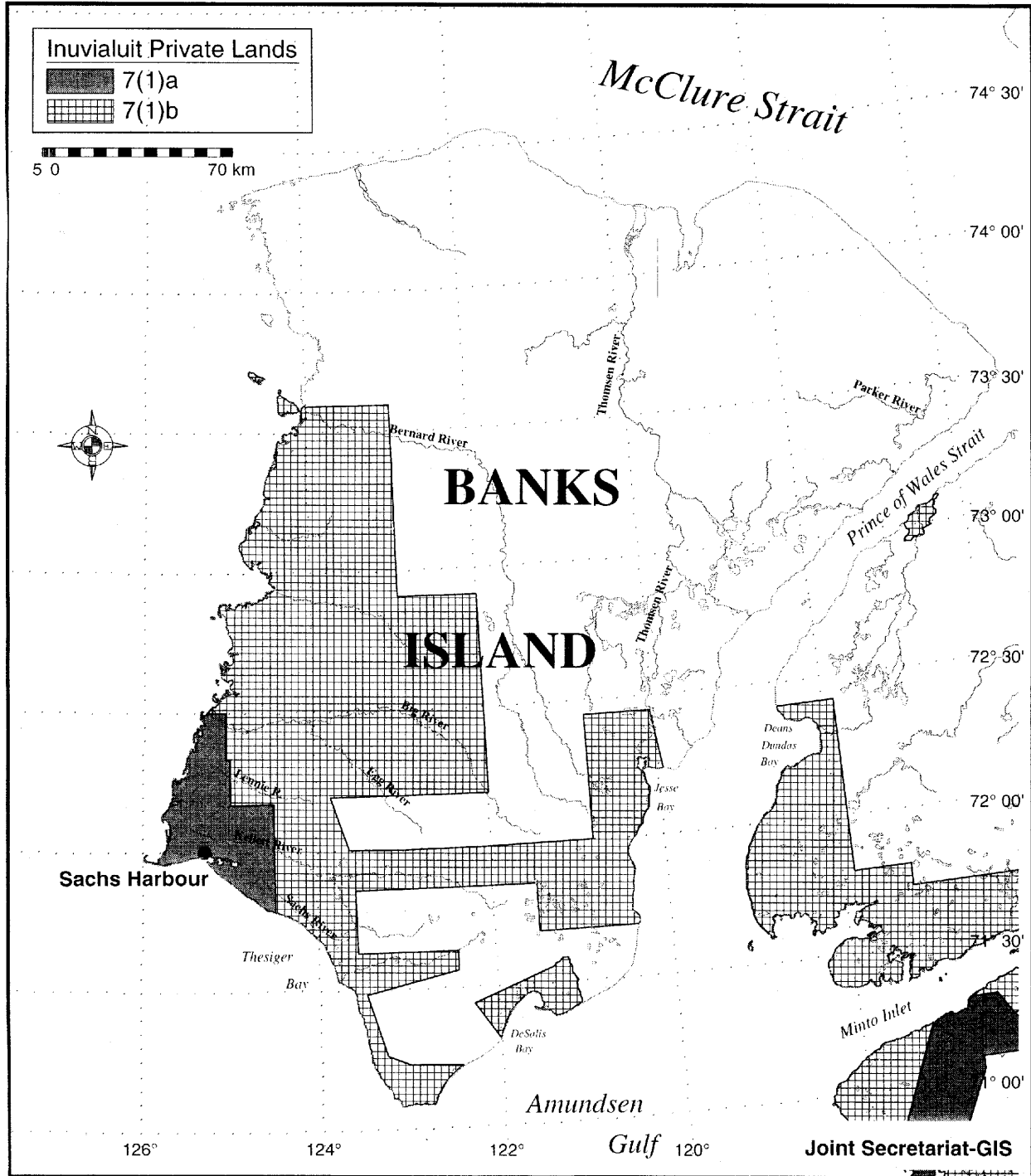
PROTECTED AREAS IN THE INUVIALUIT SETTLEMENT REGION





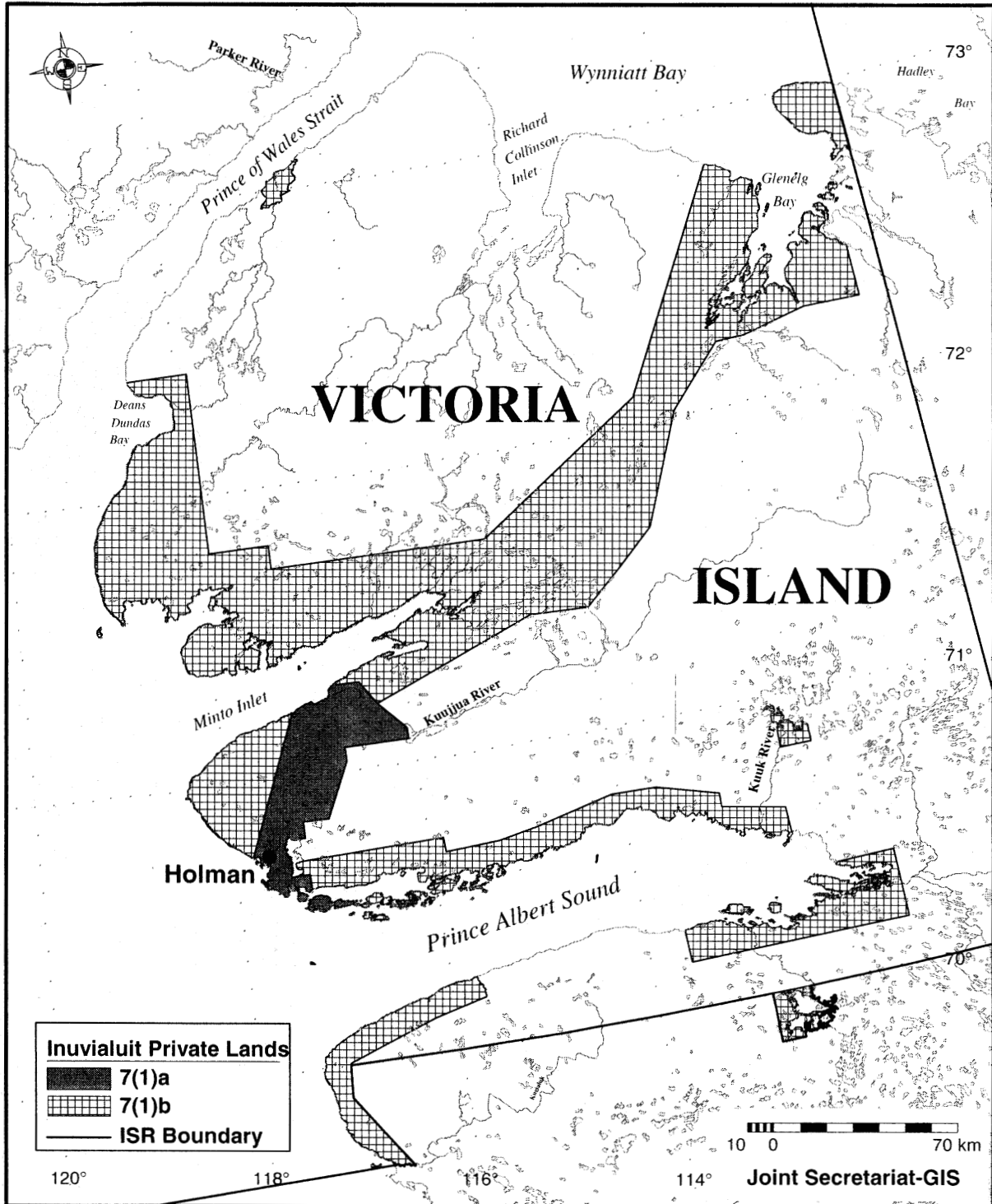
MAP 4

SACHS HARBOUR
INUVIALUIT-OWNED LANDS



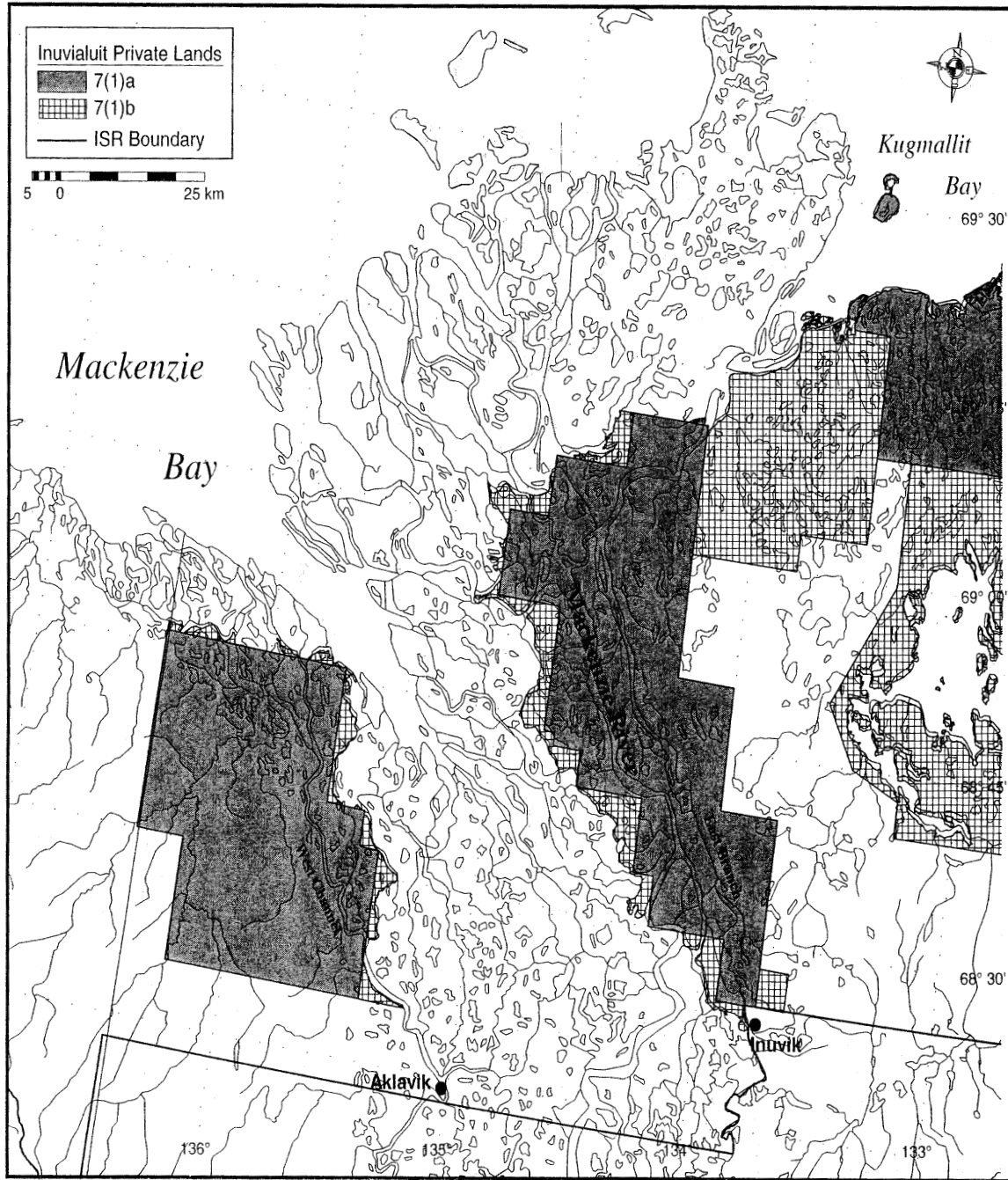
MAP 5

HOLMAN
INUVIALUIT-OWNED LANDS



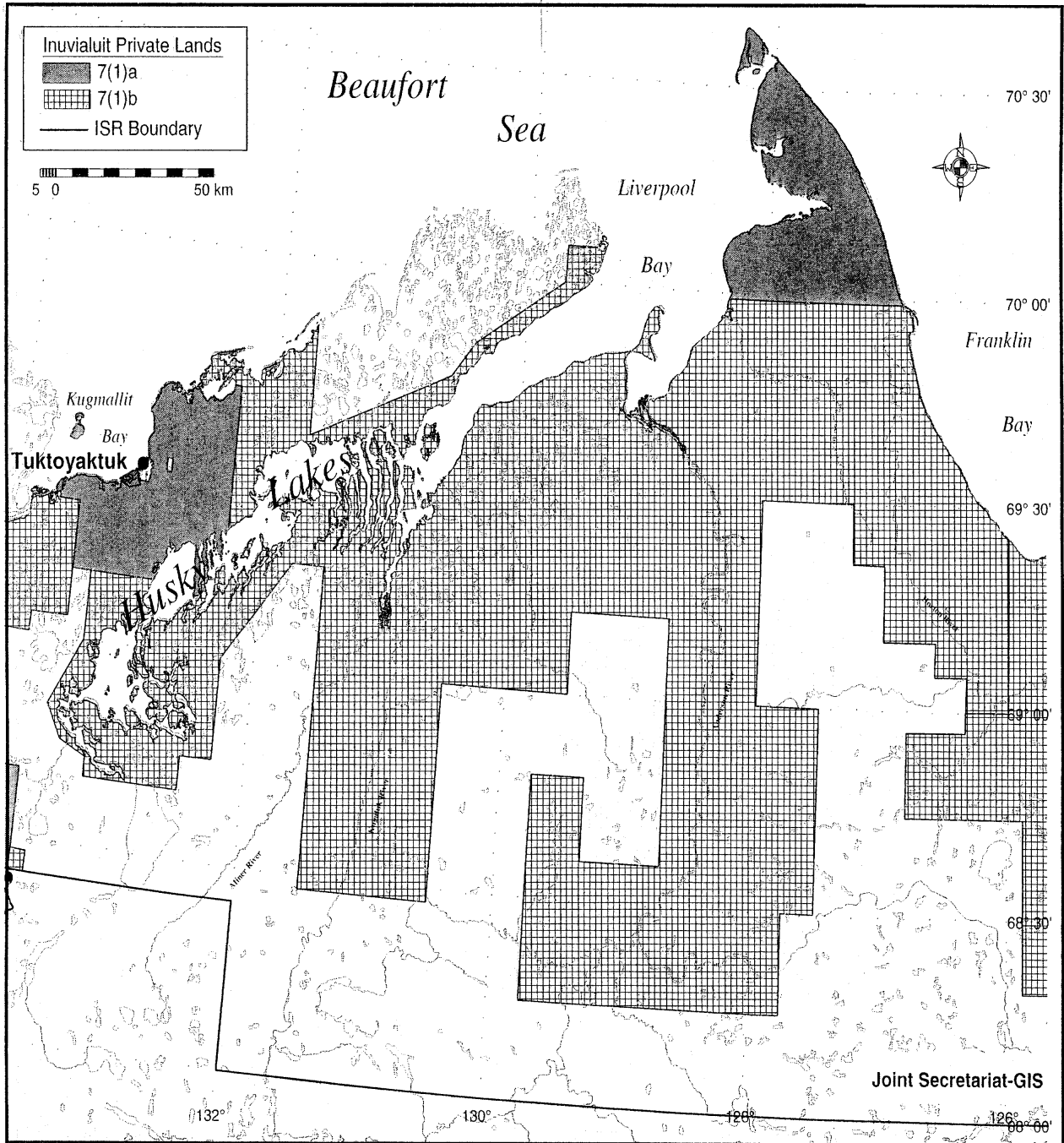
MAP 6

INUVIK AND AKLAVIK
INUVALUIT-OWNED LANDS



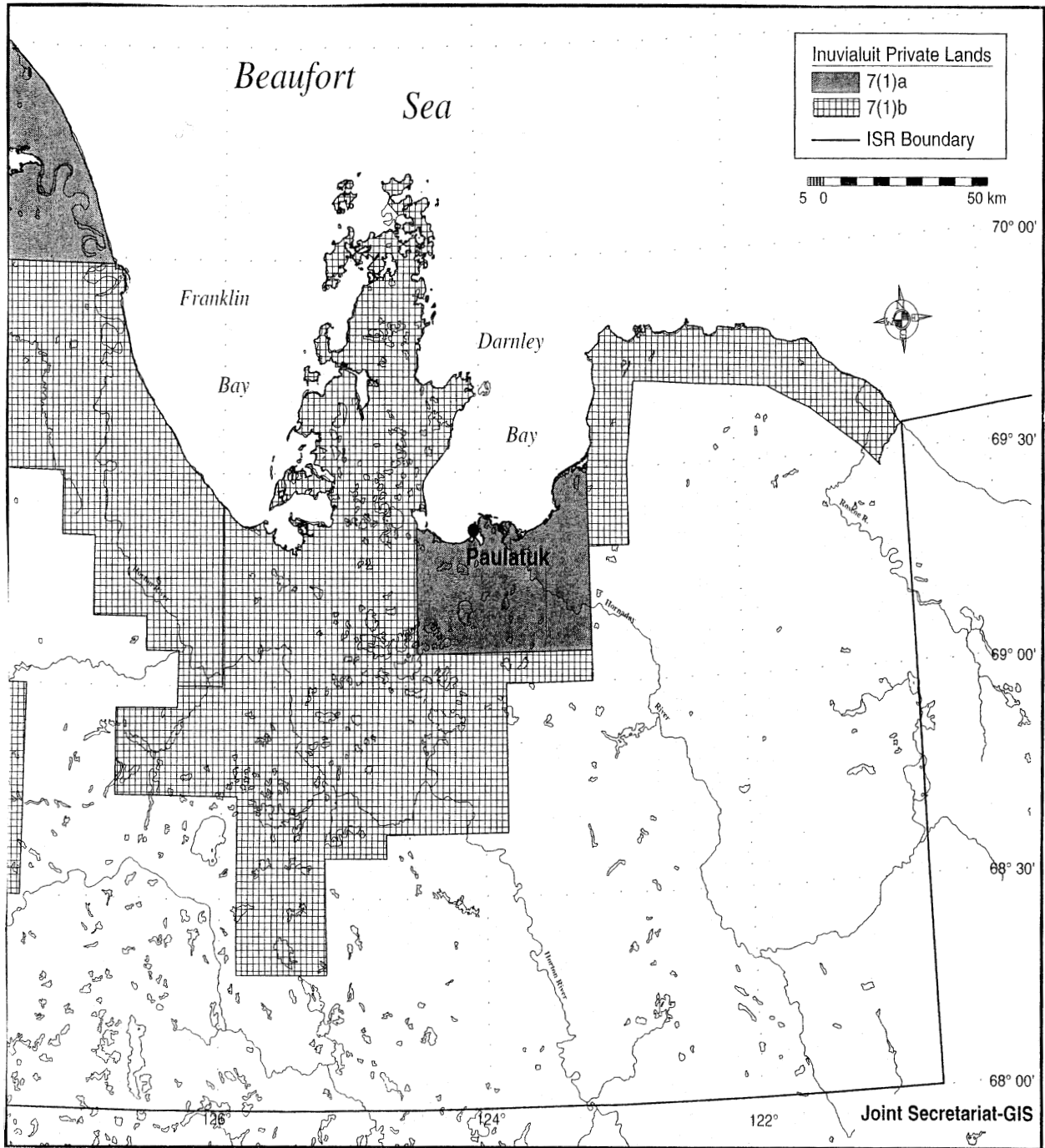
MAP 7

TUKTOYAKTUK
INUVIALUIT-OWNED LANDS



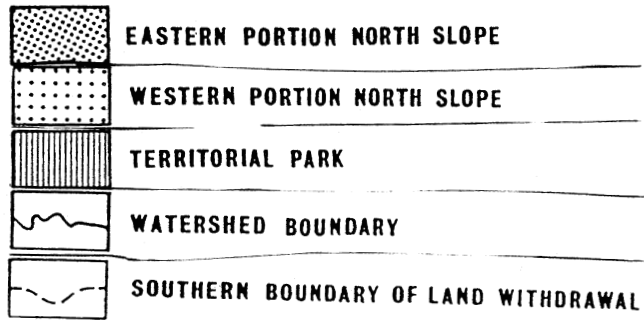
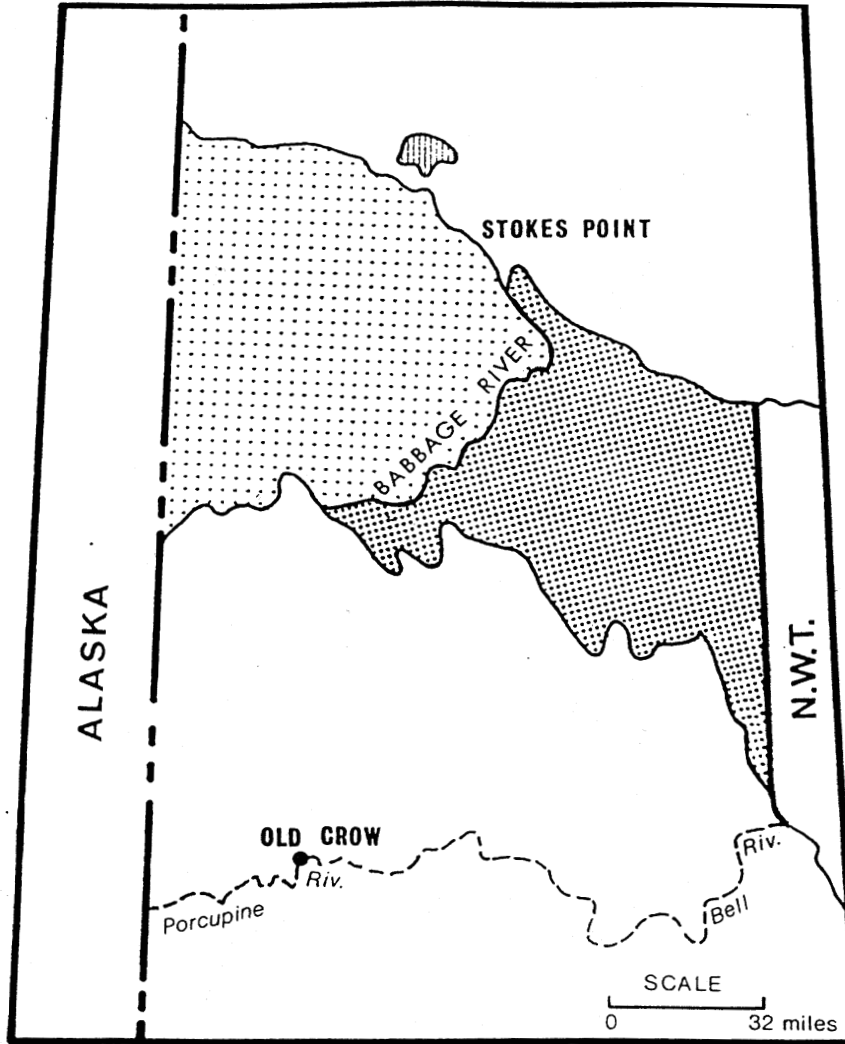
MAP 8

**PAULATUK
INUVIALUIT-OWNED LANDS**



MAP 9

YUKON NORTH SLOPE

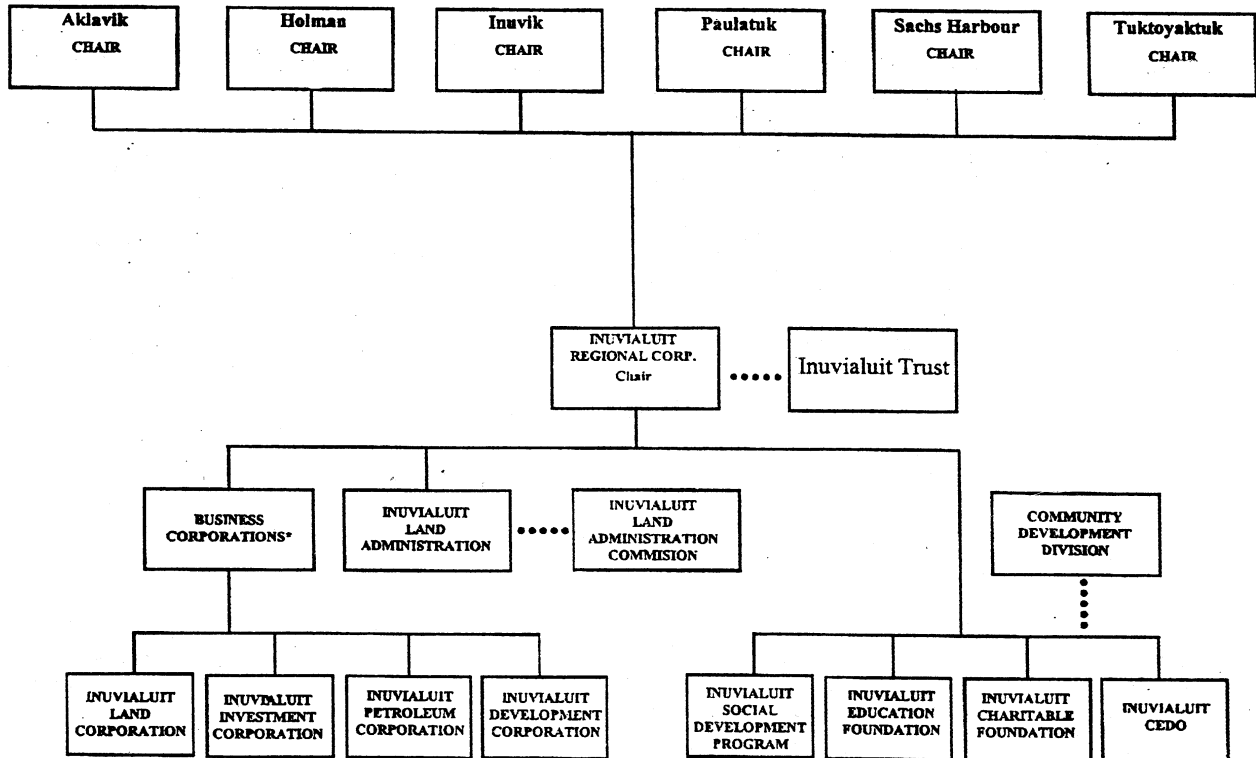


APPENDIX B

REGULATORY THRESHOLDS AND FLOW CHARTS

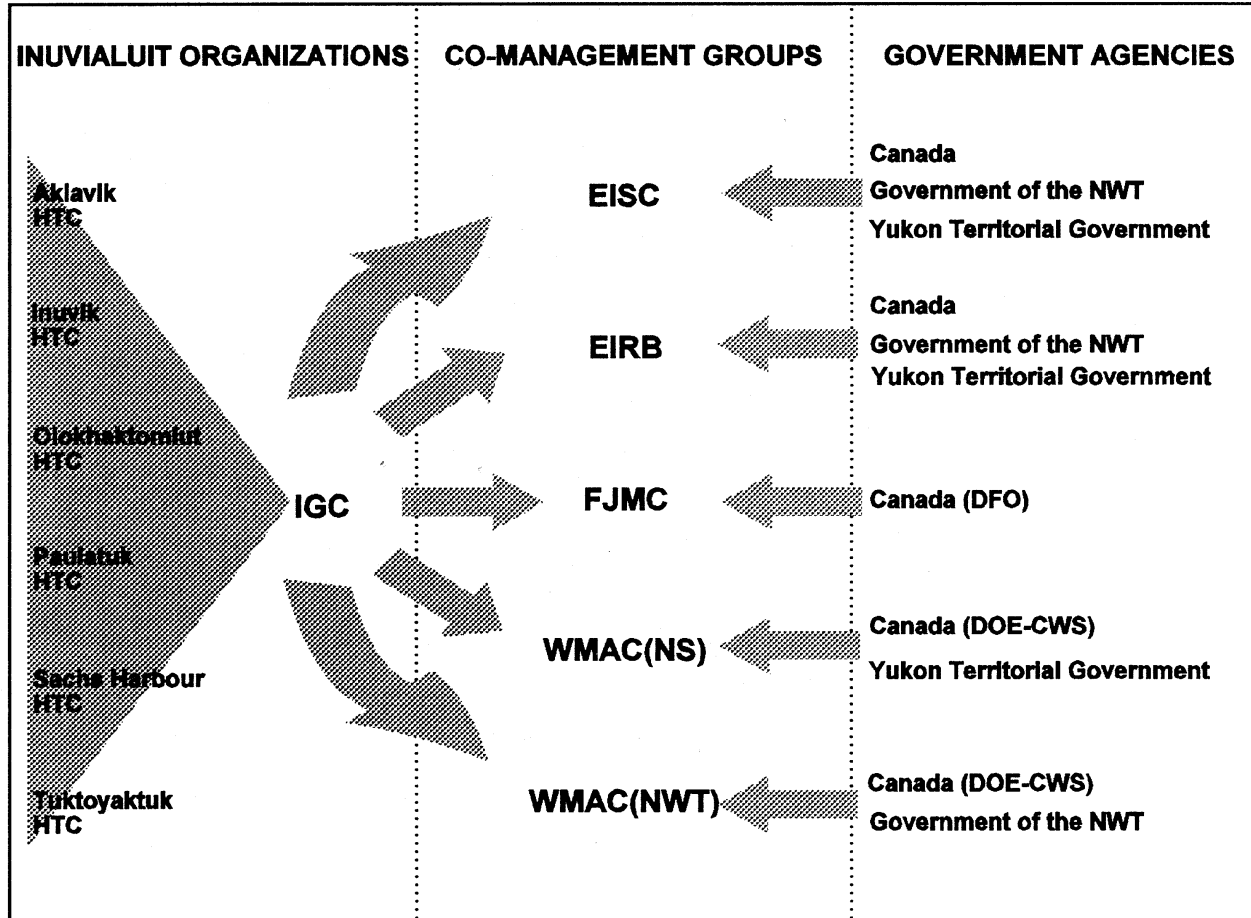
Inuvialuit Corporate Group Structure	Appendix B2
Source: IRC Annual Report	
Renewable Resource Management under the IFA: Organization Chart	Appendix B3
Source: EISC Operating Guidelines and Procedures	
Flow Chart for Environmental Screening: Environmental Impact Screening Committee	Appendix B4
Source: EISC Operating Guidelines and Procedures	
Flow Charts for Environmental Review: Environmental Impact Review Board	Appendix B5
Initiating the Public Review Process	Appendix B5
Small Scale Development (SSD) Procedure	Appendix B6
Standard Public Review (SPR) Procedure	Appendix B7
Source: EIRB Operating Procedures	
Thresholds for Class A and B Land Use Permits for Activities on Federal Crown Lands	Appendix B8
Source: <u>Territorial Land Use Regulations</u>	
Thresholds for Type A and B Water Licences on All Lands in the ISR	Appendix B9
Licensing Criteria for Mining and Milling Undertakings	Appendix B9
Licensing Criteria for Municipal Undertakings	Appendix B10
Licensing Criteria for Industrial Undertakings	Appendix B11
Source: <u>Northwest Territories Waters Regulations</u>	
Flow Chart: Application for a Type "A" Water Licence	Appendix B12
Source: Water Licensing in the Northwest Territories, Revised October 1997	
Flow Chart: Application for a Type "B" Water Licence	Appendix B13
Source: Water Licensing in the Northwest Territories, REvised October 1997	

INUVALUIT CORPORATE GROUP STRUCTURE



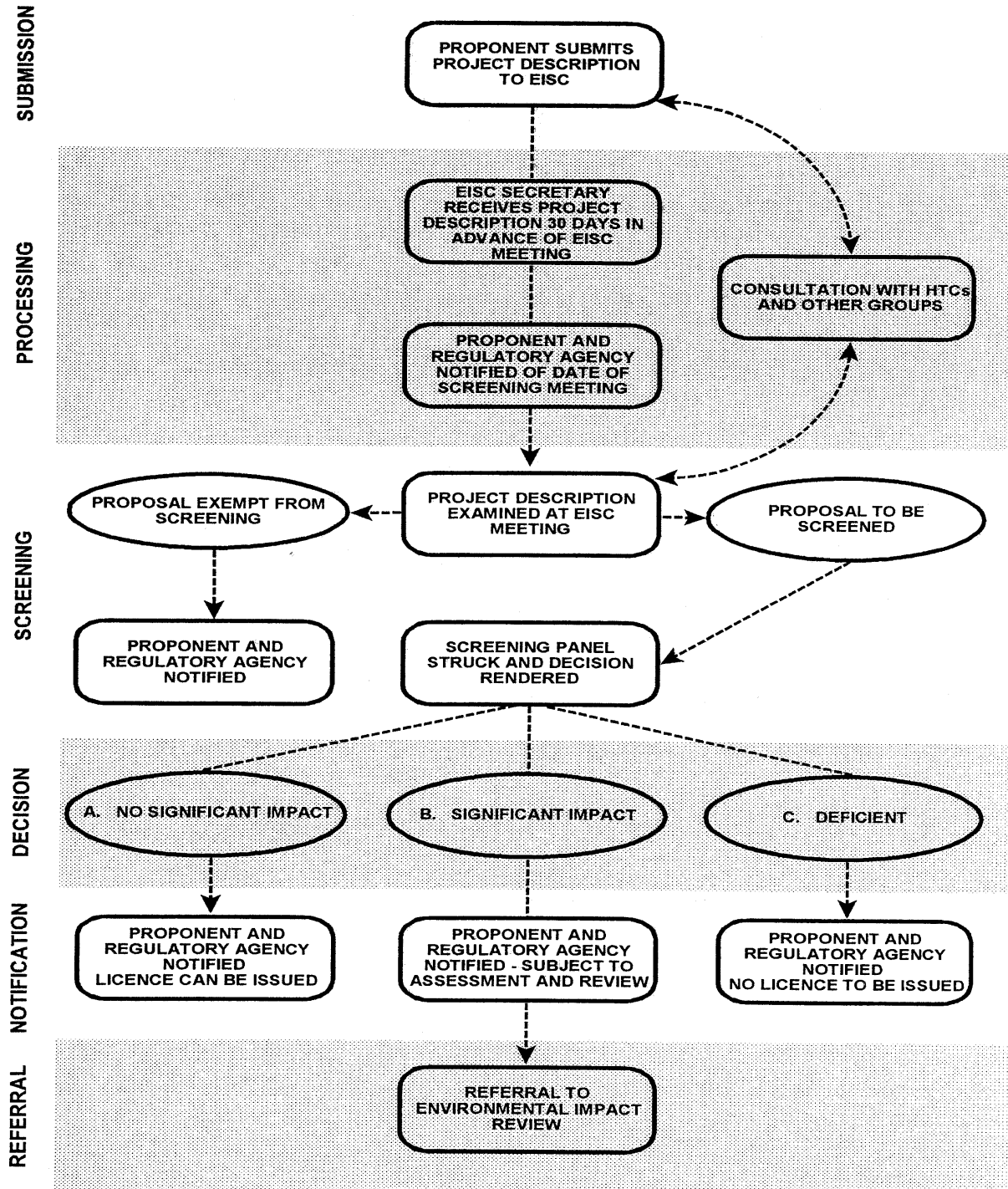
**RENEWABLE RESOURCE MANAGEMENT
UNDER THE INUVIALUIT FINAL AGREEMENT**

ORGANIZATION CHART



Source: EISC Operating Guidelines and Procedures

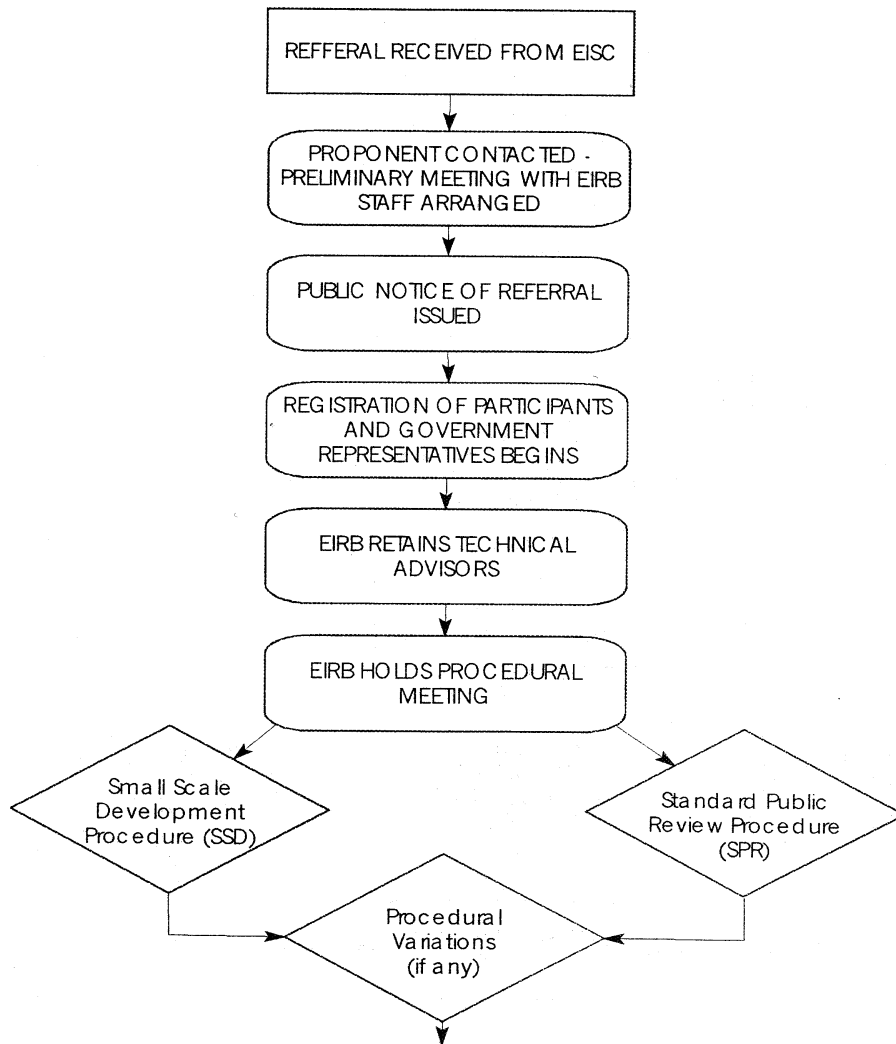
FLOW CHART FOR ENVIRONMENTAL SCREENING ENVIRONMENTAL IMPACT SCREENING COMMITTEE



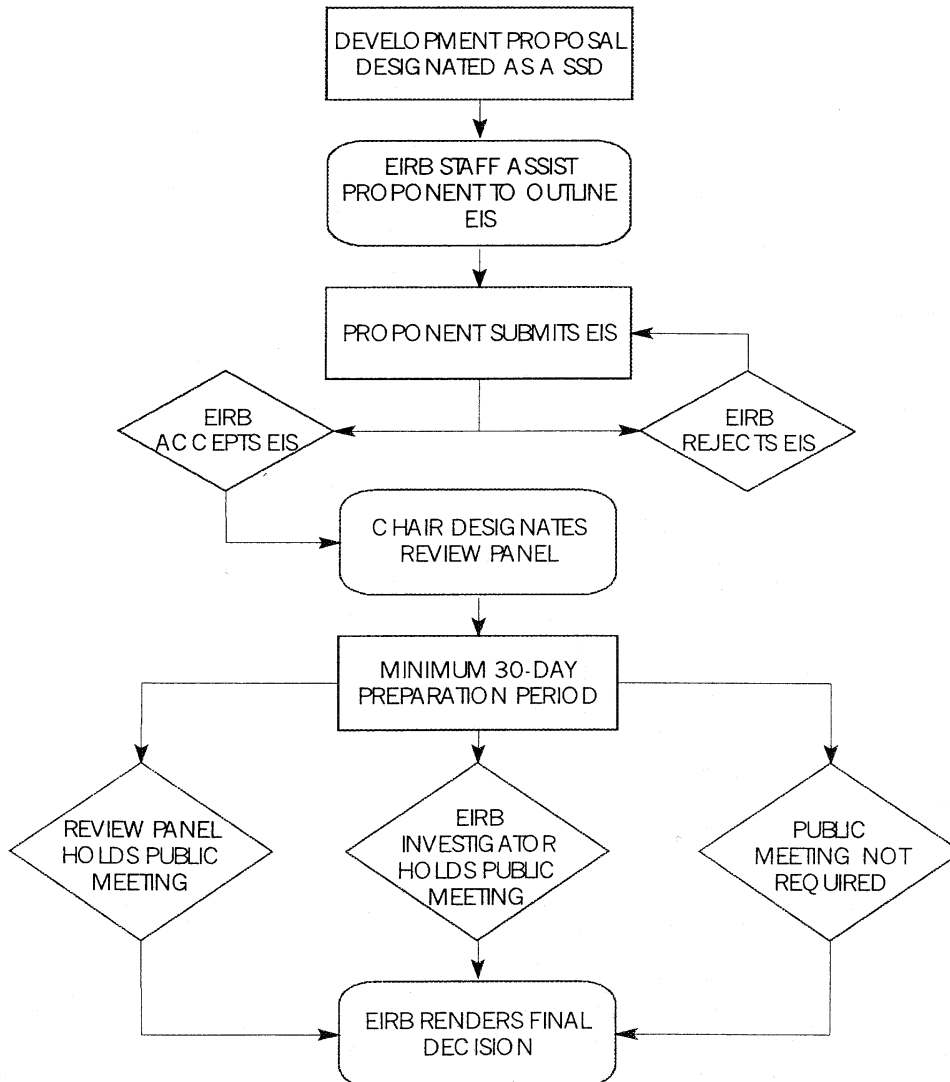
Source: EISC Operating Guidelines and Procedures

**FLOW CHART FOR ENVIRONMENTAL REVIEW
ENVIRONMENTAL IMPACT REVIEW BOARD**

INITIATING THE PUBLIC REVIEW PROCESS

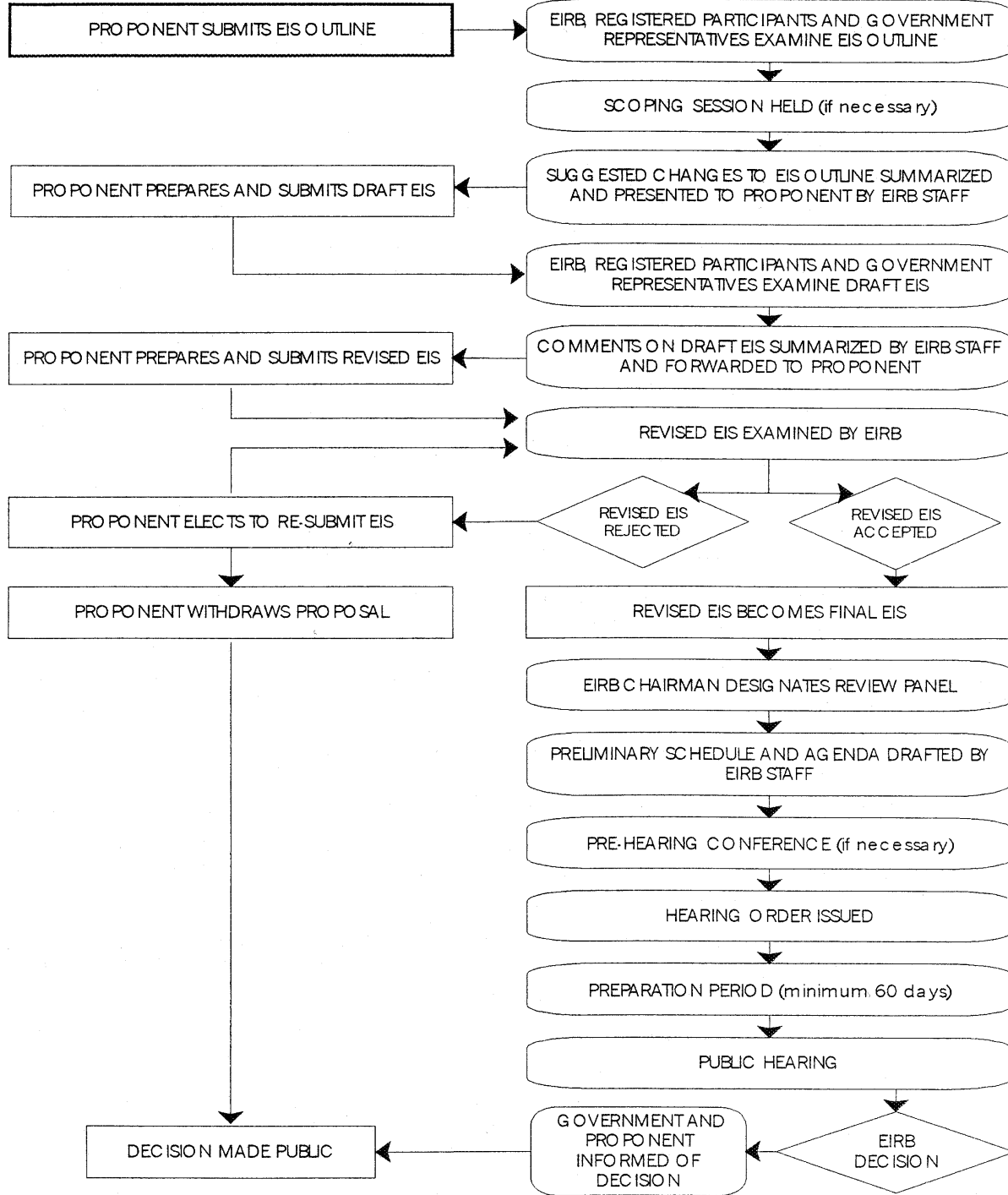


SMALL SCALE DEVELOPMENT (SSD) PROCEDURE



Source: EIRB Operating Procedures

STANDARD PUBLIC REVIEW (SPR) PROCEDURE



Source: EIRB Operating Procedures

THRESHOLDS FOR LAND USE PERMITS ON FEDERAL CROWN LANDS

Territorial Land Use Regulations, section 8: Thresholds for a Class A Land Use Permit

No person shall, without a Class A permit, carry on any work or undertaking on territorial lands that involves

- (a) the use, in any 30-day period, of more than 150 kg of explosives;
- (b) the use, except on a public road or trail maintained wholly or in part by federal funds, of any vehicle that exceeds 10 t net vehicle weight;
- (c) the use of any power driven machinery for earth drilling purposes whose operating weight, excluding the weight of drill rods or stems, bits, pumps and other ancillary equipment, exceeds 2.5 t;
- (d) the establishment of any campsite that is to be used for more than 400 man-days;
- (e) the establishment of any petroleum fuel storage facility exceeding 80 000 l capacity or the use of a single container for the storage of petroleum fuel that has a capacity exceeding 4 000 l;
- (f) the use of any self-propelled power driven machine for moving earth or clearing land of vegetation;
- (g) the use of any stationary power driven machine for hydraulic prospecting, moving earth or clearing land, other than a power saw; or
- (h) the levelling, grading, clearing, cutting or snowploughing of any line, trail or right-of-way exceeding 1.5 m in width and exceeding 4 ha in area.

Territorial Land Use Regulations, section 9: Thresholds for a Class B Land Use Permit

No person shall, without a Class B permit, carry on any work or undertaking on territorial lands that involves

- (a) the use, in any 30-day period of more than 50 kg but less than 150 kg of explosives;
- (b) the use, except on a public road or trail maintained wholly or in part by federal funds, of any vehicle that is more than 5 t but less than 10 t net vehicle weight, or the use of any vehicle of any weight that exerts pressure on the ground in excess of 35 k pa;
- (c) the use of any power driven machinery for earth drilling purposes whose operating weight, excluding the weight of drill rods or stems and bits, pumps and other ancillary equipment, is more than 500 kg but less than 2.5 t;
- (d) the establishment of any campsite that is to be used by more than two people for more than 100 but less than 400 man-days;
- (e) the establishment of any petroleum fuel storage facility that has a capacity of more than 4 000 l but less than 80 000 l or the use of a single container for the storage of petroleum fuel that has a capacity of more than 2 000 l but less than 4 000 l; or
- (f) the levelling, grading, clearing, cutting or snowploughing of any line, trail or right-of-way exceeding 1.5 m in width but not exceeding 4 ha in area.

Available on the web at: <http://canada.justice.gc.ca/FTP/EN/Regs/Chap/T/T-7/CRC1524.txt>

THRESHOLDS FOR WATER LICENCES ON ALL LANDS IN THE ISR

SCHEDULE V (Sections 5 and 8)

LICENSING CRITERIA FOR MINING AND MILLING UNDERTAKINGS

Item	Column I Water Use/ Deposit of Waste	Column II Water Use and Deposit of Waste Permitted Without a Licence	Column III Water Use and Deposit of Waste Requiring a Type "B" Licence	Column IV Water Use and Deposit of Waste Requiring a Type "A" Licence
1.	Direct water use	Use of less than 100 m ³ per day*	Use of water for milling at a rate of less than 100 tonnes of ore per day, use of water for leaching other than production leaching or use of 100 or more cubic metres per day for undertakings other than milling or production leaching*	Use of water for milling at a rate of 100 or more tonnes of ore per day or use of water for production leaching
2.	(1) Watercourse crossings, including pipelines, bridges and roads (2) Watercourse training including channel and bank alterations, culverts, spurs, erosion control, and artificial accretion	Construction of a structure across a watercourse less than 5 metres wide at ordinary high water mark at point of construction Training (a) of intermittent watercourses, (b) of watercourses that are less than 5 m wide at the ordinary high water mark at the point of training, (c) involving infilling of a watercourse with no inflow or outflow and with a surface area of less than 0.5 ha, or (d) involving removal or placement of less than 100 m ³ of material, where cross-sectional area not significantly changed at point of removal or placement	Construction of a structure across a watercourse 5 or more metres wide at ordinary high water mark at point of construction All other watercourse training	None None
	(3) Flood Control	Construction of a temporary structure	Construction of a permanent in-stream structure	None
	(4) Diversions	Diversion of a watercourse that is less than 2 metres wide at ordinary high water mark at point of diversion	All other diversions	N
	(5) Alteration of flow or storage by means of dams or dikes	Off-stream storage of a quantity of water less than or equal to 2 500 m ³	Off-stream storage of a quantity of water greater than 2 500 m ³ and less than 60 000 m ³ , or instream storage of a quantity of water less than 60 000 m ³	All other alterations or storage
3.	Deposit of waste in conjunction with (a) placer mining, or (b) other mining and milling	Any deposit of waste in conjunction with non-mechanized in-stream placer operations or with out-of-stream watercourse placer or testing operations, where no chemical additives are used and there is no direct or indirect deposit of waste to surface water Any deposit of waste, other than from milling, where there is no direct or indirect deposit to surface water	Any deposit of waste in conjunction with mechanized in-stream placer operations or with any operations where chemical additives are used Any direct or indirect deposit of waste to surface waters, or any deposit of waste from milling at a rate of less than 100 tonnes of ore per day	None Deposit of waste from milling at a rate of 100 tonnes or more of ore per day

* Does not include water taken from an artificial reservoir with no natural inflow.

SCHEDULE VI
(Sections 5 and 8)

LICENSING CRITERIA FOR MUNICIPAL UNDERTAKINGS

Item	Column I Water Use/ Deposit of Waste	Column II Water Use and Deposit of Waste Permitted Without a Licence	Column III Water Use and Deposit of Waste Requiring a Type "B" Licence	Column IV Water Use and Deposit of Waste Requiring a Type "A" Licence
1.	Direct water use	Use of less than 50 m ³ per day*	Use of 50 or more cubic metres and less than 2,000 m ³ per day*	Use of 2,000 or more cubic metres per day*
2.	(1) Watercourse crossings, including pipelines, bridges and roads	Construction of a structure across a watercourse less than 5 m in width at ordinary high water mark at point of construction	Construction of a structure across a watercourse 5 or more metres in width at ordinary high water mark at point of construction	None
	(2) Watercourse training, including channel and bank alterations, culverts, spurs, erosion control, and artificial accretion	Training (a) of intermittent watercourses, (b) of watercourses that are less than 5 m wide at the ordinary high water mark at the point of training, (c) involving infilling of a watercourse with no inflow or outflow and with a surface area of less than 0.5 ha, or (d) involving removal or placement of less than 100 m ³ of material, where cross-sectional area not significantly changed at point of removal or placement	All other watercourse training	None
	(3) Flood Control	Construction of a temporary structure	Construction of a permanent in-stream structure	None
	(4) Diversions	Diversion of a watercourse that is less than 2 metres wide at ordinary high water mark at point of diversion	All other diversions	None
	(5) Alteration of flow or storage by means of dams or dikes	Off-stream storage of a quantity of water less than or equal to 2 500 m ³	Off-stream storage of a quantity of water greater than 2 500 m ³ and less than 60 000 m ³ , or in-stream storage of a quantity of water less than 60 000 m ³	All other alterations or storage
3.	Deposit of waste by			
	(a) municipalities or settlements	Any deposit of waste in accordance with the <i>Public Sewerage Systems Regulations</i> of the Northwest Territories by a city, town, village or settlement serving 50 or fewer people where there is no direct or indirect deposit of waste to surface waters	Any deposit of waste by means of sewage collection or treatment system serving a population of between 50 and 2,000	Any deposit of waste by means of a sewage collection or treatment system serving a population of 2,000 or more
	(b) camps or lodges	Any deposit of waste in accordance with the <i>General Sanitation Regulations</i> of the Northwest Territories by a camp or lodge serving 50 or fewer people, where there is no direct or indirect deposit to surface waters	Any deposit of waste by a camp or a lodge with capacity of more than 50 occupants per day or any direct or indirect deposit of waste to surface waters	None

* Does not include water taken from an artificial reservoir with no natural inflow.

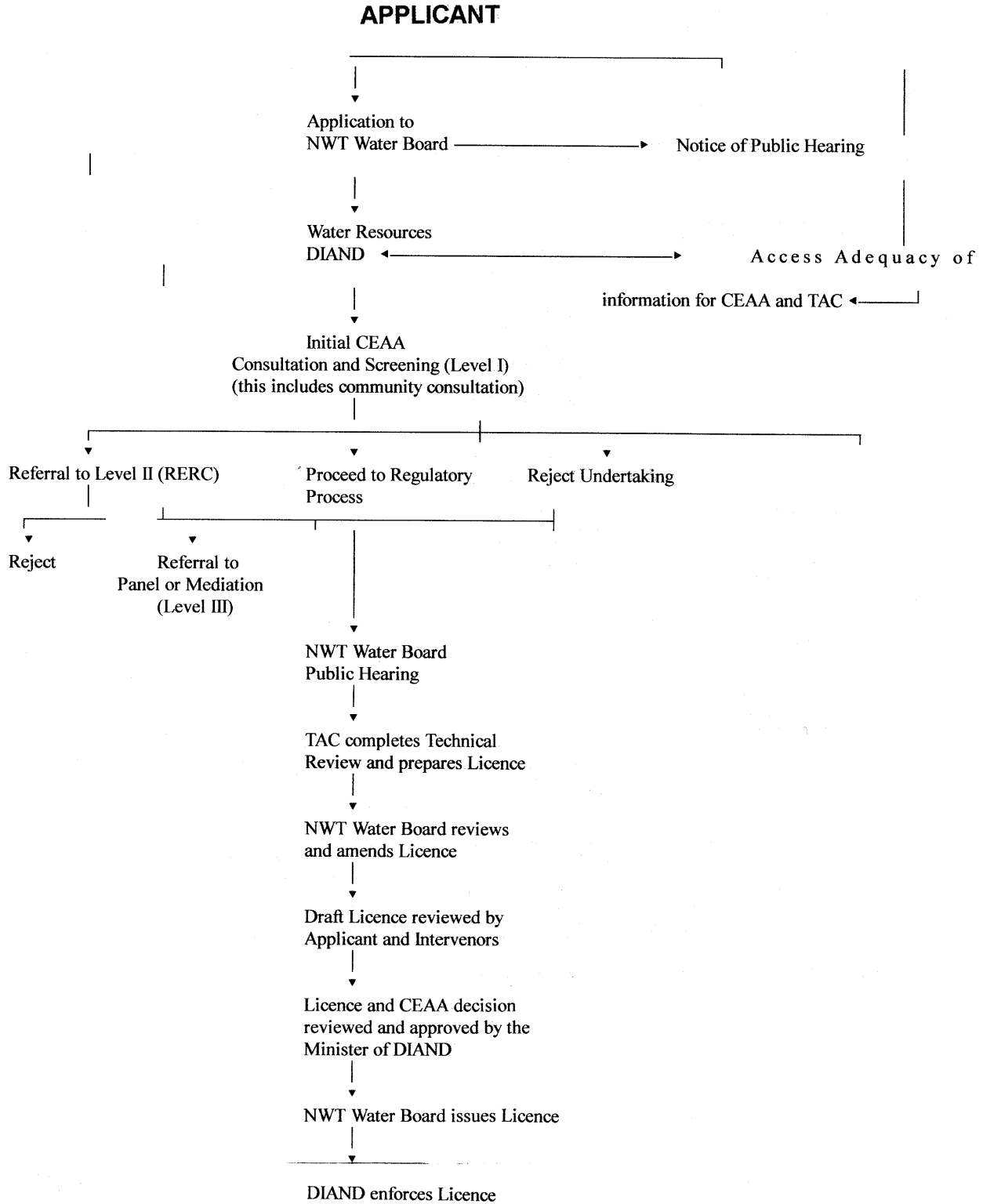
SCHEDULE IV
(Sections 5 and 8)

LICENSING CRITERIA FOR INDUSTRIAL UNDERTAKINGS

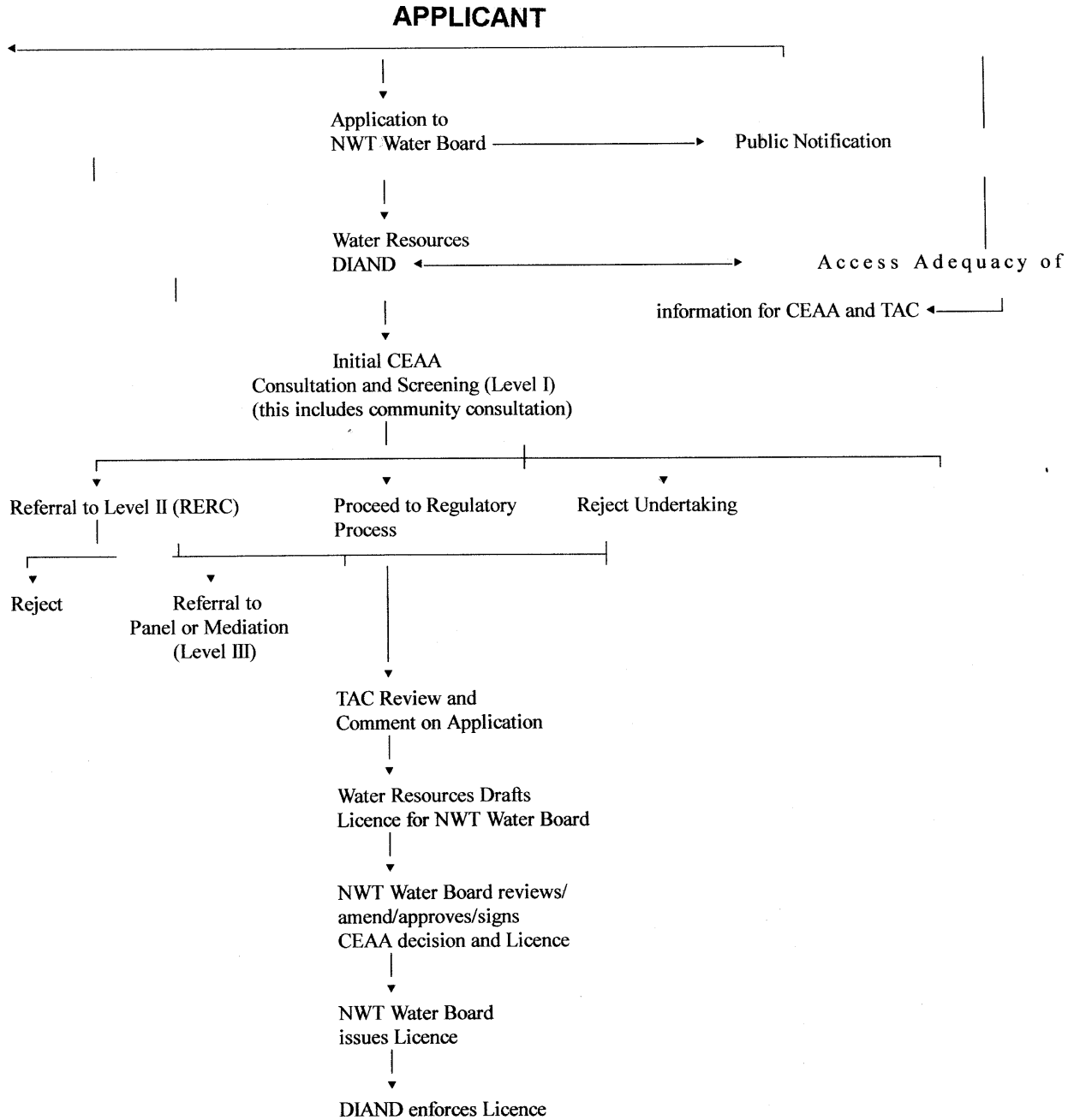
Item	Column I Water Use/ Deposit of Waste	Column II Water Use and Deposit of Waste Permitted Without a Licence	Column III Water Use and Deposit of Waste Requiring a Type "B" Licence	Column IV Water Use and Deposit of Waste Requiring a Type "A" Licence
1.	Direct water use in respect of (a) oil and gas exploration; and (b) any other industrial undertaking	Use of less than 100 m ³ per day* Use of less than 100 m ³ per day*	Use of 100 or more cubic metres per day* Use of 100 or more cubic metres per day and less than 300 cubic metres per day*	None Use of 300 or more cubic metres per day*
2.	(1) Watercourse crossings, including pipelines, bridges and roads (2) Watercourse training, including channel and bank alterations, culverts, spurs, erosion control, and artificial accretion (3) Flood Control (4) Diversions (5) Alteration of flow or storage by means of dams or dikes.	Construction of a structure across a watercourse less than 5 metres wide at ordinary high water mark at point of construction Training (a) of intermittent watercourses, (b) of watercourses that are less than 5 m wide at the ordinary high water mark at the point of training, (c) involving infilling of a watercourse with no inflow or outflow and with a surface area of less than 0.5 ha, or (d) involving removal or placement of less than 100 m ³ of material, where cross-sectional area not significantly changed at point of removal or placement Construction of a temporary structure Diversion of a watercourse that is less than 2 m wide at ordinary high water mark at point of diversion Off-stream storage of a quantity of water less than or equal to 2 500 m ³	Construction of a structure across a watercourse 5 or more metres wide at ordinary high water mark at point of construction All other watercourse training Construction of a permanent in-stream structure All other diversions Off-stream storage of a quantity of water greater than 2 500 m ³ and less than 60 000 m ³ , or instream storage of a quantity of water less than 60 000 m ³	None None None All other alterations or storage
3.	Deposit of waste in conjunction with (a) oil and gas exploration, (b) oil and gas production, processing and refining, (c) quarrying and gravel washing, (d) hydrostatic testing, (e) cooling, or (f) other industrial undertakings	None None Deposit of waste in conjunction with quarrying above ordinary high water mark where there is no direct or indirect deposit of waste to surface water Any deposit of waste associated with cleaning or testing of previously unused storage tanks or pipelines Any deposit of waste that does not contain biocides or conditioners None	Deposit of drill waste to a sump None Deposit of waste in conjunction with quarrying below ordinary high water mark or deposit of waste in conjunction with quarrying above ordinary high water mark where there is a direct or indirect deposit of waste to surface water Any deposit of waste associated with cleaning or testing of used storage tanks or pipelines Any deposit of biocides or conditioners All	Deposit of drill waste in a manner other than to a sump All deposits of waste None None None None

* Does not include water taken from an artificial reservoir with no natural inflow.

**FLOW CHART
APPLICATION FOR A TYPE "A" WATER LICENCE
For Larger Projects**



FLOW CHART
APPLICATION FOR A TYPE "B" WATER LICENCE
For Smaller Projects



APPENDIX C

REFERENCES AND GUIDES	Appendix C2
Publications of Indian and Northern Affairs Canada	Appendix C2
Publications of the Government of the Northwest Territories	Appendix C3
Other Sources	Appendix C3
Inuvialuit Publications	Appendix C4
LIST OF ACRONYMS	Appendix C5
LIST OF LEGISLATION	Appendix C6
Government of the Northwest Territories	Appendix C6
Government of Canada	Appendix C8

REFERENCES AND GUIDES

PUBLICATIONS OF INDIAN AND NORTHERN AFFAIRS CANADA

On the Inuvialuit Final Agreement

The Western Arctic Claim. A Guide to the Inuvialuit Final Agreement. Ottawa 1984

The Western Arctic Claim. The Inuvialuit Final Agreement. Ottawa, 1985

On Jurisdictional Responsibilities

Jurisdictional Responsibilities for Land Resources, Land Use and Development in the Yukon Territory and Northwest Territories. Land Management Division, Northern Affairs Program. Nov 13, 1997

Book Two: *Northwest Territories Inuvialuit Settlement Region Lands.*

Book Three: *Yukon Inuvialuit Settlement Region Lands*

Book Four: *Other Yukon Territory Federal Lands*

Guidelines for Mineral Activities in the Northwest Territories

Natural Resource Development in the NWT: Requirements, Procedures and Legislation, (DIAND)

A Guide to Territorial Land Use Regulations, Land Resources, Northern Affairs Program, DIAND, 1994

Guide to Completing Application for a Land Use Permit Pursuant to the Territorial Land Use Regulations, available from Land Administration, DIAND

How to Obtain Rights in the Northwest Territories, DIAND

Reclamation Guidelines for Northern Canada. Prepared by Hardy BBT Ltd. For Land Resources, Northern Affairs Program. Ottawa. 1987

Land Use Guidelines Access Roads and Trails. Prepared by Hardy Assoc. For Land Resources, Northern Affairs Program. Ottawa, 1994

Environmental Operating Guidelines: Access Roads and Trails, DIAND

Land Use Guidelines: Mineral Exploration Yukon and NWT. Prepared by Hardy Associates. For Land Resources, Northern Affairs Program. Ottawa. 1994

Environmental Guidelines, Pits and Quarries. For Land Resources, Northern Affairs Program. Ottawa, 1994

Placer Mining in the Northwest Territories, DIAND

Guidelines for the Discharge of Treated Municipal Wastewater in the NWT, 1992

Guidelines for Tailings Impoundment in the NWT, February 1987

Guidance for Northern Aquatic Effects Monitoring, Water Resources Division, DIAND, October 1997

Guidelines for Contingency Planning, January 1987

Guidelines for Abandonment and Restoration Planning for Mines in the NWT, September 1990

Guidelines for Acid Rock Drainage Prediction in the North

Mining Industry Questionnaire for Water Licence Applications, Water Resources, DIAND, Revised: Nov 1997

Mining Exploration and Development Questionnaire for Water Licence Applications, Water Resources, DIAND, August 1995

Water Licensing in the Northwest Territories: Summary of Procedures and Information Requirements, January 1996, Revised: January 1997

Guidelines for Mineral Activities within the Inuvialuit Settlement Region

Information and Procedures Developing the Inuvialuit Settlement Region. Ottawa, 1988.

Environmental Sensitivity Map, Inuvialuit Settlement Region, DIAND, Revised: March 1998

1995 Mineral Prospecting Agreement

Attachment "B" to NWT Prospector's Licence: Prospecting for Minerals within the Inuvialuit Settlement Region (Pursuant to 1995 Mineral Prospecting Agreement between DIAND and Inuvialuit institutions.

PUBLICATIONS OF THE GOVERNMENT OF THE NORTHWEST TERRITORIES

Department of Resources, Wildlife and Economic Development

NWT Protected Areas Strategy (PAS): Protecting Special Natural Areas in the NWT, Draft 4, 23 Sept 1998.

NWT Protected Areas Strategy (PAS): Protected Areas Toolkit, 1997.

A Guide to Legislation Affecting Exploration and Mining in the NWT, Energy Mines and Petroleum Resources (Now Resources, Wildlife and Economic Development) November 1991

Co-Management Plan for Grizzly Bear in the Inuvialuit Settlement Region. Yukon Territory and Northwest Territories. Department of Resources, Wildlife, and Economic Development, GNWT. Inuvik, NWT. 1998.

OTHER SOURCES

Key Migratory Bird Terrestrial Habitat Sites in the NWT, Occasional Paper Number 71, Canadian Wildlife Service, Alexander Ferguson, McCormick

Report on the Challenge of Community Relations, Prospectors and Developers Association of Canada, Toronto, 1997

INUVALUIT PUBLICATIONS

General Publications

Publications Available from the Joint Secretariat. Joint Secretariat. Inuvik, NWT. 1996.
Co-management in the Western Arctic and Yukon North Slope. pamphlet

Environmental Impact Screening Committee

Environmental Impact Screening Committee, Annual Activity Report. Published annually.
Environmental Impact Screening Committee. Operating Guidelines and Procedures. February 1999.

Environmental Impact Review Board

Environmental Impact Review Board. Operating Procedures, October 30, 1997.
Environmental Impact Review Board. Annual Activity Report. Published annually.

Community Conservation Plans

Paulatuk Conservation Plan: A Plan for the Conservation and Management of Renewable Resources and Lands around Paulatuk, Northwest Territories. Joint Secretariat. Inuvik, NWT

Aklavik Inuvialuit Community Conservation Plan, A Plan for the Conservation and Management of Renewable Resources and Lands within the Inuvialuit Settlement Region in the Vicinity of Aklavik, Northwest Territories. 1993. Joint Secretariat. Inuvik, NWT

Inuvik Inuvialuit Community Conservation Plan, A Plan for the Conservation and Management of Renewable Resources and Lands within the Inuvialuit Settlement Region in the Vicinity of Inuvik, Northwest Territories. Joint Secretariat. Inuvik NWT

Olokhaktokmiut Community Conservation Plan, A Plan for the Conservation and Management of Renewable Resources and Lands within the Inuvialuit Settlement Region in the vicinity of Holman, Northwest Territories. Wildlife Management Advisory Committee (NWT) and Fisheries Joint Management Committee. 1994. Joint Secretariat. Inuvik. NWT

Sachs Harbour Community Conservation Plan. A Plan for the Conservation and Management of Renewable Resources and Lands in the Vicinity of Banksland, Northwest Territories. Joint Secretariat. Inuvik, NWT

Tuktoyaktuk Conservation Plan. A Plan for the Conservation and Management of Renewable Resources and Lands around Tuktoyaktuk, Northwest Territories. Joint Secretariat. Inuvik. NWT

Conservation and Management Plans

Inuvialuit Renewable Resource Conservation and Management Plan. Prepared by WMAC (NWT) and FJMC. Available from WMAC (NWT). April 25, 1988

Yukon North Slope. The Land and the Legacy. Yukon North Slope Wildlife Conservation and Management Plan Volume 1: Environmental Overview. WMAC (NS) Secretariat. Whitehorse, Yukon. 1996

Beaufort Sea Beluga Management Plan, Third Printing. Fisheries Joint Management Committee. Joint Secretariat. Inuvik, NWT. 1998

Inuvialuit Land Administration

Inuvialuit Land Administration Rules and Procedures. Inuvik, NWT. April 1, 1986.

A Brief Summary of the Inuvialuit Land Administration Rules and Procedures. Inuvik, 1986

LIST OF ACRONYMS

CEAA	Canadian Environmental Assessment Act
CWS	Canadian Wildlife Service
DFO	Department of Fisheries and Oceans (Federal)
DIAND	Department of Indian Affairs and Northern Development
EIRB	Environmental Impact Review Board
EISC	Environmental Impact Screening Committee
FJMC	Fisheries Joint Management Committee
GNWT	Government of the Northwest Territories
GRRB	Gwich'in Renewable Resources Board
GLWB	Gwich'in Land and Water Board
HTC	Hunters and Trappers Committee (Inuvialuit under IFA)
HTA	Hunters and Trappers Association (Gwich'in and Sahtu)
IDC	Inuvialuit Development Corporation
IGC	Inuvialuit Game Council
IFA	Inuvialuit Final Agreement, 1984
ILA	Inuvialuit Land Administration
ILAC	Inuvialuit Land Administration Commission
IRC	Inuvialuit Regional Corporation
ISR	Inuvialuit Settlement Region
MVEIRB	Mackenzie Valley Environmental Impact Review Board
MVLWB	Mackenzie Valley Land and Water Board
NIRB	Nunavut Impact Review Board
NWT	Northwest Territories
NWTWCB	Northwest Territories Workers Compensation Board
RERC	Regional Environmental Review Committee (DIAND)
RWED	Resources Wildlife and Economic Development (Territorial)
SLWB	Sahtu Land and Water Board
SRRB	Sahtu Renewable Resources Board
TAC	Technical Advisory Council (to the NWT Water Board)
WMAC(NWT)	Wildlife Management Advisory Council - Northwest Territories
WMAC(NS)	Wildlife Management Advisory Council - Yukon North Slope

LIST OF LEGISLATION

GOVERNMENT OF THE NORTHWEST TERRITORIES	
LEGISLATION	RESPONSIBLE DEPARTMENT
<u>Annual Vacation Regulations</u> <u>Wages Regulations</u> <u>Labour Standards Act</u>	Department of Justice Labour Services Section
<u>Fair Practices Act</u>	Department of Justice Fair Practices Office
<u>Apprentices and Tradesmen Act</u> <u>Business Corporations Act</u> <u>Mechanics Lien Act</u> <u>Mechanics Lien Forms Regulations</u> <u>Miners Lien Act</u> <u>Miners Lien Form Regulations</u> <u>Securities Act</u> <u>Securities Regulations</u> <u>Securities Fees Regulations</u>	Department of Justice Legal Registries
<u>Worker's Compensation Act</u>	NWT Workers Compensation Board
<u>Boilers and Pressure Vessels Act</u> <u>Electrical Protection Act</u> <u>Electrical Protection Regulations</u> <u>Explosives Use Act</u> <u>Explosives Regulations</u> <u>Fire Prevention Act</u> <u>Fire Prevention Regulations</u> <u>Gas Protection Act</u> <u>Propane Cylinder Storage Regulations</u> <u>Mine Health and Safety Act</u> <u>Mine Health and Safety Regulations</u> <u>Safety Act</u> <u>General Safety Regulations</u> <u>Work Site Hazardous Materials Information System Regulations</u>	NWT Workers Compensation Board Prevention Services Mine Safety
<u>Environmental Protection Act</u> <u>Spill Contingency Planning and Reporting Regulations</u> <u>Air Quality Guidelines</u> <u>Environmental Rights Act</u> <u>Forest Protection Act</u> <u>Territorial Parks Act</u> <u>Territorial Parks Regulations</u> <u>Wildlife Act</u> <u>Certification and Disposal of Wildlife Regulations</u> <u>Critical Wildlife Areas Regulations</u> <u>Polar Bear Defence Kill Regulations</u>	Resources, Wildlife and Economic Development

GOVERNMENT OF THE NORTHWEST TERRITORIES

LEGISLATION	RESPONSIBLE AGENCY
<u>Motor Vehicles Act</u> <u>Exemption - Motor Vehicles Act</u> <u>Hours of Service Regulations</u> <u>Large Vehicle Control Regulations</u> <u>Motor Vehicle Equipment Regulations</u> <u>Seasonal Highway Regulations</u> <u>Trip Inspection Regulations</u> <u>Transportation of Dangerous Goods Act</u> <u>Transportation of Dangerous Goods Regulations</u>	Department of Transportation Motor Vehicles Section
<u>Payroll Tax, 1993, Act</u> <u>Payroll Tax Regulations</u>	Department of Finance
<u>Public Health Act</u> <u>Camp Sanitation Regulations</u> <u>Medical Care Act</u> <u>Coroner's Act</u> <u>Emergency Medical Aid Act</u>	Department of Health and Social Services
<u>Commissioner's Land Act</u> <u>Commissioner's Land Regulations</u>	Municipal and Community Affairs
<u>Engineering, Geological and Geophysical Professions Act</u>	NWT Association of Professional Engineers, Geologists and Geophysicists
<u>Historical Resources Act</u> <u>Historical Sites Declaration Regulations</u>	Prince of Wales Northern Heritage Centre
<u>Scientists Act</u> <u>Scientists Act Administration Regulations - Western NT</u>	Aurora Research Institute

GOVERNMENT OF CANADA	
LEGISLATION	RESPONSIBLE AGENCY
<u>Arctic Waters Pollution Prevention Act</u> <u>Arctic Waters Shipping Pollution Prevention Regulations</u> <u>Pollutant Substances Regulations</u> <u>Navigable Waters Protection Act</u> <u>Navigable Waters Bridges Regulations</u> <u>Navigable Waters Works Regulations</u>	Coast Guard
<u>Atomic Energy Control Act</u>	Atomic Energy Control Board
<u>Canadian Environmental Assessment Act</u> <u>Law List Regulations</u> <u>Inclusion List Regulations</u> <u>Comprehensive Study List Regulations</u> <u>Exclusion List Regulations</u> <u>Canadian Environmental Protection Act</u>	Canadian Environmental Assessment Agency
<u>Explosives Act</u> <u>Ammonium Nitrate and Fuel Oil Order</u> <u>Explosives Regulations</u> <u>Resources and Technical Surveys Act</u>	Natural Resources Canada
<u>Firearms Act</u>	Justice Canada
<u>Fisheries Act</u> <u>Fishery (General) Regulation</u> <u>Fishways Obstruction Removal Regulations</u> <u>NWT Fishery Regulations</u>	Fisheries and Oceans
<u>Fisheries Act, s. 36(3)</u> <u>Metal Mining and Liquid Effluent Regulations</u>	Environment Canada Environmental Protection Service
<u>Migratory Birds Convention Act, 1994</u> <u>Migratory Bird Sanctuary Regulations</u> <u>Migratory Birds Regulations</u> <u>Canada Wildlife Act</u> <u>Wildlife Area Regulations</u>	Canadian Wildlife Service
<u>Canada Labour Code, Part 1</u> <u>Noise Control Regulations</u> <u>Sanitation Regulations</u> <u>Canada Labour Standards Act</u> <u>Canada Labour Standards Regulations</u> <u>Canada Labour Relations Board Regulations</u> <u>Canada Industrial Relations Regulations</u>	Human Resources and Development Canada Western Region

GOVERNMENT OF CANADA	
LEGISLATION	RESPONSIBLE AGENCY
Investment Canada Regulations Precious Metals Marking Regulations	Industry Canada
<u>Western Arctic Claim Settlement Act</u> <u>Gwich'in Land Claim Settlement Act</u> <u>Indian Mining Regulations</u> <u>Northwest Territories Act</u> <u>Game Declared in Danger of Becoming Extinct</u> <u>Northwest Territories Waters Act</u> <u>Northwest Territories Waters Regulations</u> <u>Nunavut Act</u> <u>Sahtu Dene and Metis Land Claim Settlement Act</u> <u>Territorial Lands Act</u> <u>Canada Mining Regulations</u> <u>Northwest Territories Mining Districts Order</u> <u>Polar Bear Pass Withdrawal Order</u> <u>Territorial Coal Regulations</u> <u>Territorial Dredging Regulations</u> <u>Territorial Land Use Regulations</u> <u>Territorial Lands Act Exclusion Order</u> <u>Territorial Lands Regulations</u> <u>Territorial Quarrying Regulations</u> <u>Withdrawal from Disposal Order (Aulavik (Banks Island) National Park, NWT)</u> <u>Withdrawal from Disposal Order (Bluenose/Tuktut Nogait National Park, NWT)</u>	Indian and Northern Affairs Canada Yellowknife for NWT
<u>Yukon Placer Mining Act</u> <u>Yukon Quartz Mining Act</u> <u>Mining Land Use Regulations</u> <u>Territorial Lands Act</u> <u>Territorial Land Regulations</u> <u>Territorial Land Use Regulations</u> <u>Territorial Coal Regulations</u> <u>Territorial Quarrying Regulations</u> <u>Territorial Dredging Regulations</u> <u>Yukon Timber Regulations</u> <u>Yukon Waters Act and Regulations</u>	Indian and Northern Affairs Canada Whitehorse for Yukon
<u>National Parks Act</u>	Parks Canada
<u>Aeronautics Act</u> <u>Canada Shipping Act</u> <u>Transport Act</u> <u>Public Harbours and Port Facilities Act</u> <u>Bridges Act</u> <u>Government Property Traffic Act</u> <u>Airport Traffic Regulations</u> <u>Transportation of Dangerous Goods Act</u>	Transport Canada
<u>Northwest Territories Archaeological Sites Regulations</u>	Prince of Wales Northern Heritage Centre

Because of the withdrawal of Yukon North Slope lands from disposition, this list does not include the full range of Laws of General Application that would apply to activity in the Yukon part of the ISR.

APPENDIX D

CONTACTS REFERRED TO IN THIS GUIDE

INUVIALUIT ORGANIZATIONS

ORGANIZATION	TITLE	NUMBERS	MAILING ADDRESS
INUVIALUIT BENEFICIARY CORPORATIONS			
Inuvialuit Regional Corporation (IRC)	Chief Operating Officer	Tel: (867) 777-2737 Fax: (867) 777-2135	IRC Box 2120 Inuvik, NT X0E 0T0
Inuvialuit Land Administration (ILA)	Administrator	Tel: (867) 977-2202 Fax: (867) 977-2467 harends@irc.inuvialuit.com	ILA Box 290, Tuktoyaktuk, NT X0E 1C0
Inuvialuit Development Corporation (IDC)	Chairman	Tel: (867) 777-2419 Fax: (867) 777-3256 idc.inuvialuit.com	107 Mackenzie Road Bag 7, Inuvik, NT X0E 0T0
Inuvialuit Game Council (IGC)	Chairman	Tel: (867) 777-2828 Fax: (867) 777-2610 igc-c@jointsec.nt.ca	Inuvialuit Game Council Box 2120, Inuvik, NT X0E 0T0
INUVIALUIT HUNTERS AND TRAPPERS COMMITTEES			
Inuvik Hunters and Trappers Committee	Chairman	Tel: (867) 777-3671 Fax: (867) 777-4422 inu-htc@Inuvialuit.com	Box 1720, Inuvik, NT X0E 0T0
Aklavik Hunters and Trappers Committee	Chairman	Tel: (867) 978-2723 Fax: (867) 978-2661 akt-htc@jointsec.nt.ca	Box 133, Aklavik, NT X0E 0A0
Olokhaktomiut (Holman) Hunters and Trappers Committee	Chairman	Tel: (867) 396-4808 Fax: (867) 396-3025	Box 161, Holman, NT X0E 0S0
Paulatuk Hunters and Trappers Committee	Chairman	Tel: (867) 580-3004 Fax: (867) 580-3404	General Delivery Paulatuk, NT X0E 1N0
Sachs Harbour Hunters and Trappers Committee	Chairman	Tel: (867) 690-3028 Fax: (867) 690-3616	General Delivery Sachs Harbour NT X0E 0Z0
Tuktoyaktuk Hunters & Trappers Committee	Chairman	Tel: (867) 977-2457 Fax: (867) 977-2433	Box 286, Tuktoyaktuk NT X0E 1C0

ORGANIZATION	TITLE	NUMBERS	MAILING ADDRESS
INUVIALUIT COMMUNITY CORPORATIONS			
Aklavik Community Corporation	Corporate Manager	Tel: (867) 978-2414 Fax: (867) 978-2815	Aklavik Community Corp Box 119, Aklavik, NT X0E 0A0
Inuvik Community Corporation	Corporate Manager	Tel: (867) 777-2603 Fax: (867) 777-4422	Inuvik Community Corp Box 1365, Inuvik, NT X0E 0T0
Holman Community Corporation	Corporate Manager	Tel: (867) 396-4701 Fax: (867) 396-3284	Holman Community Corp Box 127, Holman, NT X0E 0S0
Paulatuk Community Corporation	Corporate Manager	Tel: (867) 580-3601 Fax: (867) 580-3508	Paulatuk Community Corporation Gen. Del. Paulatuk, NT X0E 1N0
Sachs Harbour Community Corporation	Corporate Manager	Tel: (867) 690-3025 Fax: (867) 690-4905	Sachs Harbour Community Corporation Box 59, Sachs Harbour, NT X0E 0Z0
Tuktoyaktuk Community Corporation	Corporate Manager	Tel: (867) 977-2390 Fax: (867) 977-2504	Tuktoyaktuk Community Corporation Box 290, Tuktoyaktuk NT X0E 1C0
Holman Community Conservation Committee	Secretary	Tel: (867) 396-4701 Fax: (867) 396-3284	Holman Community Conservation Committee, Box 161 Holman NT X0E 0S0
CO-MANAGEMENT INSTITUTIONS			
Fisheries Joint Management Committee (FJMC)	Chairman	Tel: (867) 777-2828 Fax: (867) 777-2610 fjmc@jointsec.nt.ca	FJMC Box 2120, Inuvik, NT X0E 0T0
Environmental Impact Screening Committee (EISC)	Secretary	Tel: (867) 777-2828 Fax: (867) 777-2610 eisceirb@jointsec.nt.ca	EISC Box 2120, Inuvik, NT X0E 0T0
Environmental Impact Review Board (EIRB)	Secretary	Tel: (867) 777-2828 Fax: (867) 777-2610 eisceirb@jointsec.nt.ca	EIRB Box 2120, Inuvik, NT X0E 0T0
Wildlife Management Advisory Council (WMAC) NWT	Chairman	Tel: (867) 777-2828 Fax: (867) 777-2610 pjusher@istar.ca	WMAC (NWT) Box 2120, Inuvik, NT X0E 0T0
Wildlife Management Advisory Council (North Slope)	Secretary	Tel: (867) 667-4861 Fax: (867) 667-6629 wmacns@web.net nrg@web.net	WMAC (North Slope) Box 5928, Whitehorse, Yukon Y1A 5L9

GOVERNMENT OF CANADA

General Information Number: (800) 667-3355

Web: <http://canada.gc.ca>

ORGANIZATION	CONTACT	NUMBERS	MAILING ADDRESS
DEPARTMENT OF INDIAN AFFAIRS AND NORTHERN DEVELOPMENT			
Department of Indian and Northern Affairs, NWT	Chairman, Regional Environmental Review Committee (RERC)	Tel: (867) 669-2647 Fax (867) 669-2707	DIAND Box 1500, Yellowknife, NT X1A 2R3
	Manager, Land Administration	Tel: (867) 669-2671 Fax (867) 669-2713	Central numbers: Tel: (867) 669-2500 Fax: (867) 669-2709
	Manager, Environment and Conservation	Tel: (867) 669-2589 Fax: (867) 669-2701	Service en francais: 1-800-567-9604
	Manager, Water Management	Tel: (867) 669-2651 Fax (867) 669-2716	
	Manager, Contaminants	Tel: (867) 669-2756 Fax (867) 669-2721	
	Mining Recorder	Tel: (867) 669-2634 Fax (867) 669-2714	
	Engineer of Mines Geological Mapping Mineral Resources	Tel: (867) 669-2636 Fax (867) 669-2725	
	Director, Mineral Resources (Pathfinder Services)	Tel: (867)-669-2571 Fax: (867)-669-2725	
NWT Water Board	Executive Assistant	Tel: (867) 669-2772 Fax: (867) 669-2719	NWT Water Board Box 1500 Yellowknife, NT X1A 2R3
DIAND Inuvik	District Manager North Mackenzie District Northern Affairs Program	Tel: (867) 777-3361 Fax: (867) 777-2090	DIAND Inuvik Office Box 2100, Inuvik, NT X0E 0T0

ORGANIZATION	CONTACT	NUMBERS	ADDRESS
OTHER FEDERAL GOVERNMENT DEPARTMENTS			
Parks Canada	Northern Parks Advisor	Tel: (867) 669-2821 Fax: (867) 669-2829	Parks Canada Box 1166, Yellowknife, NT X1A 2N8
Canadian Wildlife Service	Chief, North Conservation Division	Tel: (867) 669-4760 Fax: (867) 873-8185 kevin.mccormick@ec.gc.ca	Canadian Wildlife Service 301-5294 50 Avenue Yellowknife, NT X1A 1ER
Fisheries and Oceans	Area Habitat Biologist, Western Arctic Region	Tel: (867) 669-4902 Fax: (867) 669-4941	DFO Box 2310 Yellowknife NT X1A 2P7
	Inuvik District Western Arctic Region	Tel: (867) 777-3314 Fax: (867) 777-7501	Fisheries and Oceans Box 1871 Inuvik NT X0E 0T0
Environmental Protection Service, Environment Canada	Manager, Northern Division	Tel: (867) 669-4725 Spill Line: (867) 920-8130	301-5204 50 Avenue Yellowknife NT X1A 1E2
Atomic Energy Control Board	Manager, Uranium Facilities Division	Tel: 1-800-668-5284 Fax: (613) 995-5086	AECB Box 1046 Ottawa ON K1P 5S9
Canadian Coast Guard	Senior Navigable Waters Officer	Tel: (604) 775-8867 Fax: (604) 775-8828	Canadian Coast Guard Navigable Waters 555 West Hastings Street Suite 300 Vancouver BC V6B 5G3
Transport Canada	Western Region (General Reception)	Tel: (204) 983-3152 Fax: (204) 983-5048	Transport Canada Box 8550 344 Edmonton Street Winnipeg MN R3C 0P6
	General Aviation, Western Region	Tel: (204) 983-4341 Fax: (204) 984-2069	
	Regional Director, Surface, Western Region	Tel: (204) 983-2991 Fax: (204) 983-8992	
	Administration, Harbours and Ports	Tel: (604) 666-2607 Fax: (604) 666-2692	Transport Canada Suite 600, 800 Burrard St Vancouver, BC V6Z 2J8
Natural Resources Canada	Director, Office of Environmental Affairs	Tel: (613) 995-3420 Fax: (613) 995-5719	580 Booth Street Ottawa ON K1A 0E4
Canadian Environmental Assessment Agency	Pacific and Northern Region	Tel: (604) 666-2431 Fax: (604) 666-6990	Suite 320 757 West Hastings St. Vancouver, BC V6C 1A1

GOVERNMENT OF THE NORTHWEST TERRITORIES

Main Switchboard Number: (867) 873-7500

ORGANIZATION	CONTACT	NUMBERS	MAILING ADDRESS
Resources, Wildlife and Economic Development (RWED)	Director, Wildlife and Fisheries	Tel: (867) 920-8064	RWED GNWT Box 1320 Yellowknife NT X1A 2L9 Main: (867) 873-7115 Fax: (867) 873-0114
	Director of Pollution Control	Tel: (867) 873-7654	
	Director, Minerals Oil & Gas	Tel: (867) 920-3214	
	Manager, Legislation and Enforcement	Tel: (867) 873-7905 Fax: (867) 873-0563	
	Director Parks and Tourism	Tel: (867) 873-7902 Fax: (867) 873-0163	
	Regional Superintendent Inuvik Region	Tel: (867) 777-7286 Fax: (867) 777-7321	RWED Inuvik Region Bag Service #1 Inuvik NT X0E 0T0
	Manager, Fisheries and Wildlife.	Tel: (867) 777-7320 Fax: (867) 777-7321	
	Supervisor, Wildlife Management	Tel: (867) 777-7305	
	Director, Forest Management	Tel: (867) 872-7700 Fax: (867) 872-2077	Forest Fire Centre Box 7 Fort Smith NT X0E 0P0
	Forest Fire Emergency Officer	Tel: (867) 777-3333	RWED Inuvik Region Bag Service #1 Inuvik NT X0E 0T0
Prince of Wales Northern Heritage Centre	Senior Archaeologist	Tel: (867) 873-7551 Fax: (867)-0205	Prince of Wales Northern Heritage Centre Box 1320 Yellowknife NT X1A 2L9
Municipal and Community Affairs	Senior Environmental Planner Community Operations	Tel: (867) 920-8038 Fax: (867) 920-6343 mdavy@maca.gov.nt.ca	MACA, GNWT Box 1320 Yellowknife NT X1A 2L9
	Senior Lands Officer Inuvik Regional Office	Tel: (867) 777-7362 Fax: (867) 777-7352	MACA Bag Service #1 Inuvik NT X0E 0T0
	Community Planner Norman Wells Area Office	Tel: (867) 587-2440 Fax: (867) 587-2044	MACA, Box 10 Norman Wells NT X0E 0V0

ORGANIZATION	CONTACT	NUMBERS	MAILING ADDRESS
Aurora Research Institute Science Institute West	Science Licensing Officer	Tel: (867) 777-4029 Fax: (867) 777-4624	Aurora Research Institute P.O. Box 1450 Inuvik X0E 0T0
Northwest Territories Workers Compensation Board	Assistant Director, Revenue	Tel: (867) 920-3888	NWT WCB Box 8888 Yellowknife NT X1A 2R3 Main: (867)920-3888 1-800-661-0792 Fax: (867)873-4596
	Chief Inspector of Mines	Tel: (867) 920-3888	
	Chief Industrial Safety Officer	Tel: (867) 920-3888	
Department of Justice	Labour Services Board	Tel: (867) 873-7486	GNWT Box 1320 Yellowknife NT X1A 2L9
Municipal and Community Affairs	Fire Marshall	Tel: (867) 920-7469 Fax: (867) 873-0260	
Department of Health and Social Services	Chief Medical Officer	Tel: (867) 920-3231 Fax: (867) 873-0442	
Legal Registry Department of Justice	Registrar of Corporations	Tel: (867) 873-7492	

GOVERNMENT CONTACTS IN YUKON TERRITORY

ORGANIZATION	CONTACT	NUMBERS	MAILING ADDRESS
DIAND Yukon	Director Mineral Resources	Tel: (867) 667 3126	DIAND Yukon 345-300 Main St Whitehorse, Yukon, Y1A 2B5 Main Numbers: Tel. (867) 667-3161/3232 Fax (867) 667-3214
	Chief Mining Land Use	Tel: (867) 667-3172	
	Director Development Assessment Process	Tel: (867) 667-3175	
	Regional Manager Land Resources	Tel: (867) 667-3170	
	Regional Manager Water Resources	Tel: (867) 667-3145	
	Resource Management Officer	Tel: (867) 993-5648 Fax: (867) 993-6233	DIAND Box 279, Dawson City, Yukon Y0B 1G0
	District Mining Recorder	Tel: (867) 993-5343 Fax: (867) 993-6747	
Yukon Territory Water Board	Chairman	Tel: (867) 667-3980 Fax: (867) 668-3628	Yukon Territory Water Board, 419 Range Road, Whitehorse, Yukon Y1A 3V1
Yukon Territory Department of Renewable Resources		Tel: (867) 667-5652 Fax: (867) 393-6219	Department of Renewable Resources Box 2703, Whitehorse, Yukon Y1A 2C6

OTHER CONTACTS

ORGANIZATION	CONTACT	NUMBERS	MAILING ADDRESS
Gwich'in Renewable Resources Board	Executive Director	Tel: (867) 777-3428 Fax: (867) 777-4260	GRRB 105 Distributor Street Inuvik, NT X0E 0T0
Sahtu Renewable Resources Board	Executive Director	Tel: (867) 588-4040 Fax: (867) 588-3324	SRRB Box 134 Tulita NT X0E 0K0
Nunavut Impact Review Board	Secretary	Tel: (867) 983-2593 Fax: (867) 983-2594	NIRB Box 2379 Cambridge Bay (Ikaluktutiak) Nunavut Territory X0E 0C0
Mackenzie Valley Environmental Impact Review Board	Executive Director	Tel: (867) 873-9636 Fax: (867) 920-4671 E-mail: mveirwg@internorth.com Website: http://users.internorth.com/~mveirwg	MVEIRB Box 938 Yellowknife NT X1A 2N7
Mackenzie Valley Land and Water Board	Executive Director	Tel: (867) 669-0506 Fax: (867) 873-6610	MVLWB Working Group Box 2130 Yellowknife NT X1A 2P6